



LPI6XHN

report date: 2024-03-29

General information

Make	LEXUS
Model	NX 300H LUXURY CVT 300H LUXURY
Colour	-
Year of manufacture	-
Top speed	112 mph
0 - 60 mph	9.3 seconds
Gearbox	1 speed CVT

Engine & fuel consumption

Power	155 BHP
Max. torque	210 Nm at 4.400 rpm
Cylinders	4
Fuel type	Hybrid / Electric / (clean)
Consumption city	53.3 mpg
Consumption extra urban	55.4 mpg
Consumption combined	54.3 mpg





Internet history

Entry 1

Date 2021-06-09

Pictures 5

Listing price [View report](#)



source: autotrader.co.uk



Damage history

Check the damage history for this LEXUS. See if, where and when this LEXUS had damage and the car repair costs. We also check if this LEXUS was scrapped. Download the premium report [here](#) for the results.

Damage 1

Date	
Category	
Type	

Damage 2

Date	
Category	
Type	



Extra LEXUS salvage check



If this vehicle was seen at a salvage auction we offer: vehicle pictures, salvage location, retail value. Download the premium report [here](#) for more information.

More info >



Vehicle valuation

What is this car worth? See the vehicle value of this LEXUS in the premium report. We check: purchase value, age, mileage, MOT history, damages and online sale prices.

Trade retail value	£ 19,999
Auction value	£ 19,999
Average private trade value	£ 19,999

More info >



Owner history

For how long did the current and previous owner(s) have this LEXUS? How many owners did this LEXUS have? Check it in the premium report and see all owner registrations. Download the full report [here](#).

XXXXXX	XXXXXX
XXXXXXXXXXXX	XXXXXX
XXXXXXXXXX	XXXXXX
XXXXXX	XXXXXX
XXXXXXXXXXXX	XXXXXX
XXXXXXXXXX	XXXXXX

More info >

Plate changes

See in this check if this LEXUS had different number plates.

Number of plates	1
Current registration	XXXXX
Plate since	2019-06-29
Current registration	XXXXX
Plate since	2019-06-29

More info >



Finance check

Check if this LEXUS is financed, has an outstanding loan or finance agreement. If you are purchasing a vehicle it is smart to ensure that any finance that may have been taken out on this LEXUS has been settled.

If not, and you buy this LEXUS then you could lose the money and the car you paid for.

Download the premium report [here](#) and check if this LEXUS is financed.

Finance company	XXXXXXXXXX	XXXX
Date of agreement	XXXXXXXXXX	XXXX
Agreement type	XXXXXXXXXX	XXXX
Agreement term	XXXXXXXXXX	XXXX
Agreement number	XXXXXXXXXX	XXXX
Contact info	XXXXXXXXXX	XXXX

More info >



Mileage check

Mileage registrations 1



Registration #1 2019-01-01 2024-03-29

More info >



Car features

The LEXUS factory car options list is only available in the premium report.

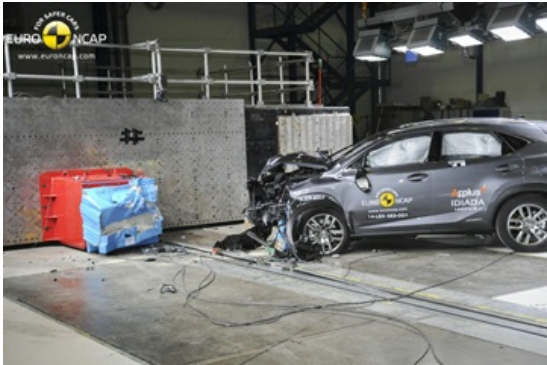
S0225	Air conditioning
S0295	
S0482	
S0501	
S0566	
S0567	
S0569	

View the complete LEXUS factory list for this vehicle [here](#).

More info >

Safety ratings

NCAP rating	★★★★★
Adult	82%
Children	82%
Pedestrian	69%
Safety systems	71%
Overall rating	77%
Video	see crash video



Dimensions & weight

Width	2130 mm
Height	1645 mm
Length	4630 mm
Wheel base	2660 mm
Kerb weight	1785 kg
Max. allowed weight	2395 kg

Additional information

Fuel tank capacity	56 l
Fuel delivery	Multi-Point Injection
Number of doors	5
Number of seats	5

Engine number	2AR1404194
---------------	------------