



report date: 2024-03-28

General information

Make	MAZDA
Model	3 SE
Colour	Black
Year of manufacture	2014
Top speed	121 mph
0 - 60 mph	8.9 seconds
Gearbox	6 speed Manual

Engine & fuel consumption

Power	118 BHP
Max. torque	210 Nm at 4.000 rpm
Engine capacity	1.998 cc
Cylinders	4
Fuel type	Petrol
Consumption city	43.5 mpg
Consumption extra urban	65.7 mpg
Consumption combined	55.4 mpg
CO2 emission	119 g/km
CO2 label	C





Internet history

Entry 1

Date	2021-02-01
Pictures	10
Listing price	<a href="#">View report</a>



source: [autoonline.co.uk](https://www.autoonline.co.uk)



MOT history

MOT expiry date	2025-03-01
MOT pass rate	57 %
MOT passed	8
Failed MOT tests	6
Total advice items	47
Total items failed	20

MOT #14	2024-02-26 14:52
MOT test number	422365560544
Result	✓ Passed
Next expiry date	2025-03-01
Advice	Nearside Rear Tyre worn close to legal limit/worn on edge (5.2.3 (e))
Advice	Offside Rear Tyre worn close to legal limit/worn on edge (5.2.3 (e))

MOT #13	2024-02-21 14:56
MOT test number	485093620193
Result	✗ Failed
Fail	Electronic stability control warning lamp indicates a fault (7.12 (e))
Fail	Offside Front Lower Suspension arm ball joint likely to become detached (5.3.4 (a) (ii))
Fail	Nearside Rear Tyre tread depth below requirements of 1.6mm (5.2.3 (e))
Advice	Nearside Front Tyre worn close to legal limit/worn on edge (5.2.3 (e))
Fail	Anti-lock braking system warning lamp indicates an ABS fault (1.6 (b))
Fail	Nearside Front Lower Suspension arm ball joint likely to become detached (5.3.4 (a) (ii))
Fail	Offside Front Tyre tread depth below requirements of 1.6mm (5.2.3 (e))
Advice	Offside Rear Tyre worn close to legal limit/worn on edge (5.2.3 (e))

**MOT #12**

2023-02-17 16:13

**MOT test number**

559371513463

**Result**

✓ Passed

- Minor** Nearside Obligatory mirror slightly loose (3.3 (b) (i))
- Advice** Nearside Rear Suspension arm corroded but not seriously weakened upper and lower (5.3.3 (b) (i))
- Advice** Offside Rear Suspension arm corroded but not seriously weakened upper and lower (5.3.3 (b) (i))
- Advice** Rear Sub-frame corroded but not seriously weakened (5.3.3 (b) (i))

**MOT #11**

2023-02-17 09:44

**MOT test number**

138821730685

**Result**

✗ Failed

- Fail** Nearside Front Tyre has a bulge, caused by separation or partial failure of its structure (5.2.3 (d) (ii))
- Advice** Offside Rear Suspension arm corroded but not seriously weakened upper and lower (5.3.3 (b) (i))
- Advice** Rear Sub-frame corroded but not seriously weakened (5.3.3 (b) (i))
- Advice** Offside Front Nail in tyre
- Advice** Nearside Rear Suspension arm corroded but not seriously weakened upper and lower (5.3.3 (b) (i))
- Minor** Nearside Obligatory mirror slightly loose (3.3 (b) (i))

**MOT #10**

2022-03-02 14:12

**MOT test number**

562735467733

**Result**

✓ Passed

- Minor** Offside Front Lower Suspension arm ball joint dust cover severely deteriorated (5.3.4 (b) (i))
- Advice** Front Brake pad(s) wearing thin (1.1.13 (a) (ii))
- Minor** Nearside Front Lower Suspension arm ball joint dust cover severely deteriorated (5.3.4 (b) (i))

**MOT #9** 2022-03-01 14:02**MOT test number** 254905562110**Result** ✗ Failed

- Fail** Offside Front Anti-roll bar linkage ball joint excessively worn (5.3.4 (a) (i))
- Minor** Offside Front Lower Suspension arm ball joint dust cover severely deteriorated (5.3.4 (b) (i))
- Fail** Offside Front Tyre has a bulge, caused by separation or partial failure of its structure (5.2.3 (d) (ii))
- Fail** Nearside Front Anti-roll bar linkage ball joint excessively worn (5.3.4 (a) (i))
- Minor** Nearside Front Lower Suspension arm ball joint dust cover severely deteriorated (5.3.4 (b) (i))
- Fail** Offside Rear Anti-roll bar linkage insecurely attached (5.3.3 (a) (i))
- Fail** Nearside Front Tyre has a lump, caused by separation or partial failure of its structure (5.2.3 (d) (ii))
- Advice** Front Brake pad(s) wearing thin (1.1.13 (a) (ii))

**MOT #8** 2021-03-01 11:04**MOT test number** 187592832951**Result** ✓ Passed**MOT #7** 2020-10-16 14:08**MOT test number** 708907871371**Result** ✓ Passed

**MOT #6**

2020-10-15 13:16

**MOT test number**

336019765428

**Result****✗ Failed**

- Fail** Nearside Front Suspension arm ball joint dust cover no longer prevents the ingress of dirt (5.3.4 (b) (ii))
- Fail** Nearside Front Brake pipe excessively corroded (1.1.11 (c))
- Fail** Nearside Rear Brake pipe excessively corroded (1.1.11 (c))
- Fail** Offside Front Suspension arm ball joint dust cover no longer prevents the ingress of dirt (5.3.4 (b) (ii))
- Fail** Offside Front Brake pipe excessively corroded (1.1.11 (c))
- Fail** Offside Rear Brake pipe excessively corroded (1.1.11 (c))

**MOT #5**

2019-12-16 13:51

**MOT test number**

669900979494

**Result****✓ Passed**

- Advice** Offside Rear Child Seat fitted not allowing full inspection of adult belt
- Advice** Nearside Rear Tyre worn close to legal limit/worn on edge 215/45/18 (5.2.3 (e))
- Advice** Nearside Front Tyre slightly damaged/cracking or perishing outer sidewall slightly damaged. (5.2.3 (d) (ii))
- Advice** Nearside Front Brake pipe corroded, covered in grease or other material abs to flexi brake pipe corroded. (1.1.11 (c))
- Advice** Offside Rear Brake disc worn, pitted or scored, but not seriously weakened disc slightly corroded. (1.1.14 (a) (ii))
- Advice** Nearside Rear Brake pipe corroded, covered in grease or other material main brake pipe (onto flexi) corroded. (1.1.11 (c))
- Advice** Offside Rear Tyre worn close to legal limit/worn on edge 215/45/18 (5.2.3 (e))
- Advice** Central Front Brake pipe corroded, covered in grease or other material abs to flexi brake pipe corroded. (1.1.11 (c))

**MOT #4**

2019-12-16 12:56

**MOT test number**

507741310918

**Result****✗ Failed****Fail** Offside Rear Coil spring fractured or broken (5.3.1 (b) (i))**Advice** Offside Rear Brake disc worn, pitted or scored, but not seriously weakened disc slightly corroded. (1.1.14 (a) (ii))**Advice** Central Front Brake pipe corroded, covered in grease or other material abs to flexi brake pipe corroded. (1.1.11 (c))**Advice** Offside Rear Tyre worn close to legal limit/worn on edge 215/45/18 (5.2.3 (e))**Advice** Offside Rear Child Seat fitted not allowing full inspection of adult belt**Advice** Nearside Front Brake pipe corroded, covered in grease or other material abs to flexi brake pipe corroded. (1.1.11 (c))**Advice** Nearside Rear Tyre worn close to legal limit/worn on edge 215/45/18 (5.2.3 (e))**Advice** Nearside Rear Brake pipe corroded, covered in grease or other material main brake pipe (onto flexi) corroded. (1.1.11 (c))**Advice** Nearside Front Tyre slightly damaged/cracking or perishing outer sidewall slightly damaged. (5.2.3 (d) (ii))**MOT #3**

2018-12-12 14:06

**MOT test number**

596081752870

**Result****✓ Passed****Advice** Nearside Front Brake pipe corroded, covered in grease or other material (1.1.11 (c))**Advice** Offside Front Lower Suspension arm pin or bush worn but not resulting in excessive movement (5.3.4 (a) (i))**Advice** Offside Front Brake pipe corroded, covered in grease or other material (1.1.11 (c))**Advice** Child Seat fitted not allowing full inspection of adult belt**Advice** Nearside Front Lower Suspension arm pin or bush worn but not resulting in excessive movement (5.3.4 (a) (i))



MOT #2	2018-12-11 12:01
MOT test number	671375513682
Result	✗ Failed
Fail	Parking brake lever has excessive movement indicating incorrect adjustment (1.1.6 (c))
Advice	Nearside Rear Tyre worn close to legal limit/worn on edge (5.2.3 (e))
Advice	Offside Front Lower Suspension arm pin or bush worn but not resulting in excessive movement (5.3.4 (a) (i))
Advice	Child Seat fitted not allowing full inspection of adult belt
Advice	Offside Front Brake pipe corroded, covered in grease or other material (1.1.11 (c))
Advice	Nearside Front Lower Suspension arm pin or bush worn but not resulting in excessive movement (5.3.4 (a) (i))
Advice	Offside Rear Tyre worn close to legal limit/worn on edge (5.2.3 (e))
Advice	Nearside Front Brake pipe corroded, covered in grease or other material (1.1.11 (c))

MOT #1	2017-12-18 15:17
MOT test number	171164413983
Result	✓ Passed





Tax & MOT check

✓  
**Taxed**  
**Tax due:**  
1 March 2025

✓  
**MOT**  
**Expires:**  
1 March 2025

<b>Tax status</b>	Valid until 1 March
<b>Days left</b>	305
<b>MOT expiry date</b>	1 March 2025
<b>Full MOT history</b>	<a href="#">See MOT history</a>

Tax calculation

<b>Vehicle class</b>	48
<b>Band</b>	C
<b>Single payment (12 months)</b>	£ 35,00,-
<b>Single six month payment</b>	Not applicable
<b>Total payable by 12 monthly instalments</b>	£ 36,75,-



Damage history

Check the damage history for this MAZDA. See if, where and when this MAZDA had damage and the car repair costs. We also check if this MAZDA was scrapped. Download the premium report [here](#) for the results.

Damage 1

Date	
Category	
Type	



Damage 2

Date	
Category	
Type	



Extra MAZDA salvage check



If this vehicle was seen at a salvage auction we offer: vehicle pictures, salvage location, retail value. Download the premium report [here](#) for more information.

More info >



Vehicle valuation

What is this car worth? See the vehicle value of this MAZDA in the premium report. We check: purchase value, age, mileage, MOT history, damages and online sale prices.

Trade retail value	£ 19,999
Auction value	£ 19,999
Average private trade value	£ 19,999

More info >



Owner history

For how long did the current and previous owner(s) have this MAZDA? How many owners did this MAZDA have? Check it in the premium report and see all owner registrations. Download the full report [here](#).

Owner	Registration
Owner	Registration
Owner	Registration
Owner	Registration
Owner	Registration
Owner	Registration
Owner	Registration

More info >

Plate changes

See in this check if this MAZDA had different number plates.

Number of plates	1
Current registration	SY64XKG
Plate since	2019-09-29
Current registration	SY64XKG
Plate since	2019-09-29

More info >



Finance check

Check if this MAZDA is financed, has an outstanding loan or finance agreement. If you are purchasing a vehicle it is smart to ensure that any finance that may have been taken out on this MAZDA has been settled.

If not, and you buy this MAZDA then you could lose the money and the car you paid for.

Download the premium report [here](#) and check if this MAZDA is financed.

Finance company	XXXXXXXXXX	XXXX
Date of agreement	XXXXXXXXXX	XXXX
Agreement type	XXXXXXXXXX	XXXX
Agreement term	XXXXXXXXXX	XXXX
Agreement number	XXXXXXXXXX	XXXX
Contact info	XXXXXXXXXX	XXXX

More info >



Mileage check

Odometer	In miles
Mileage registrations	16
First mileage registration	2014-12-31
Last registration	2024-02-26
Complete history	<a href="#">See info</a>



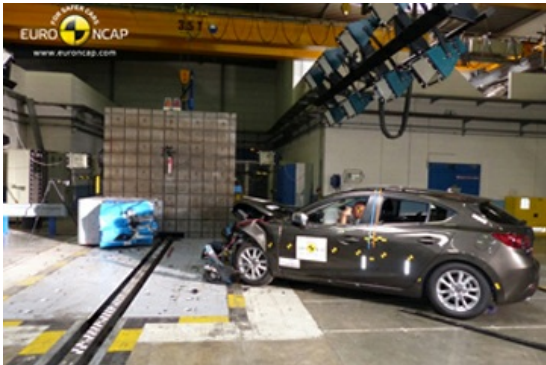
Registration #1	2014-12-31	26 mi
Registration #2	2017-12-18	23.680 mi
Registration #3	2018-12-11	30.680 mi
Registration #4	2018-12-12	30.690 mi
Registration #5	2019-12-16	39.061 mi
Registration #6	2019-12-16	39.061 mi
Registration #7	2020-10-15	43.607 mi
Registration #8	2020-10-16	43.607 mi
Registration #9	2020-10-16	43.607 mi
Registration #10	2020-10-16	43.607 mi
Registration #11	2020-10-16	43.607 mi
Registration #12	2020-10-16	43.607 mi
Registration #13	2020-10-16	43.607 mi
Registration #14	2020-10-16	43.607 mi
Registration #15	2020-10-16	43.607 mi
Registration #16	2020-10-16	43.607 mi

More info >



Safety ratings

NCAP rating	★★★★★
Adult	93%
Children	86%
Pedestrian	65%
Safety systems	81%
Overall rating	85%
Video	<a href="#">see crash video</a>



Dimensions & weight

Width	1795 mm
Height	1465 mm
Length	4465 mm
Wheel base	2700 mm
Kerb weight	1205 kg
Max. allowed weight	1815 kg

Additional information

Fuel tank capacity	51 l
Fuel delivery	Direct Injection
Number of doors	5
Number of seats	5
Number of axles	2
Engine number	PE 20540474