



BU5IWWZ

report date: 2024-03-29

General information

Make	VOLKSWAGEN
Model	LUPO E
Colour	Green
Year of manufacture	-
Top speed	106 mph
0 - 60 mph	12.0 seconds
Gearbox	5 speed Manual

Engine & fuel consumption

Power	75 BHP
Max. torque	124 Nm at 3.800 rpm
Cylinders	4
Fuel type	Petrol
Consumption city	32.5 mpg
Consumption extra urban	57.6 mpg
Consumption combined	44.8 mpg

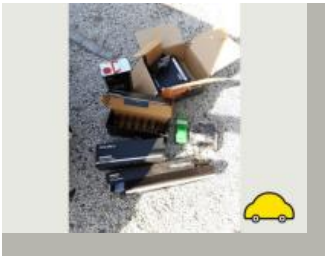
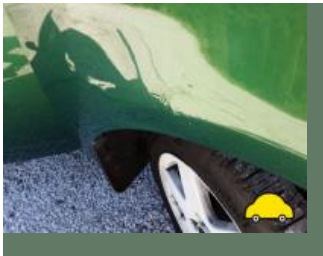




Internet history

Entry 1

Date	2021-09-24
Pictures	14
Listing price	View report



source: autotrader.co.uk

**MOT history****MOT #22** 2022-01-04 11:44**MOT test number** 112565312806**Result** ✓ Passed**Next expiry date** 2023-01-15

- Advice** Front Direction indicator slightly discoloured Both front indicators discoloured (4.4.3 (a))
- Advice** Exhaust has a minor leak of exhaust gases (6.1.2 (a))
- Advice** Oil leak, but not excessive (8.4.1 (a) (i))
- Advice** Front suspension struts running close to front tyres
- Advice** Headlamp has a product on the lens but not seriously reducing light output Both headlamps have shrouds (4.1.4 (b))
- Advice** Oil leak, but not excessive (8.4.1 (a) (i))
- Advice** Both front interior door cards loose

MOT #21 2021-01-07 09:54**MOT test number** 416430976383**Result** ✓ Passed

- Advice** Rear Sub-frame corroded but not seriously weakened (5.3.3 (b) (i))
- Advice** Rear Brake pipe corroded, covered in grease or other material all rear (1.1.11 (c))
- Advice** Exhaust has a minor leak of exhaust gases (6.1.2 (a))
- Advice** Front Sub-frame corroded but not seriously weakened (5.3.3 (b) (i))
- Advice** Offside Rear Coil spring corroded (5.3.1 (b) (i))
- Advice** Offside Front Brake pipe corroded, covered in grease or other material (1.1.11 (c))

**MOT #20**

2021-01-05 12:20

MOT test number

427439162354

Result**✗ Failed****Advice** Rear Brake pipe corroded, covered in grease or other material all rear (1.1.11 (c))**Advice** Offside Front Brake pipe corroded, covered in grease or other material (1.1.11 (c))**Fail** Front Tyre(s) of different sizes are fitted on the same axle. (5.2.3 (b))**Advice** Front Sub-frame corroded but not seriously weakened (5.3.3 (b) (i))**Advice** Offside Rear Coil spring corroded (5.3.1 (b) (i))**Fail** Offside Front Coil spring fractured or broken (5.3.1 (b) (i))**Fail** Battery insecure and likely to fall from carrier (4.13 (a) (ii))**Advice** Offside Front Tyre worn close to legal limit/worn on edge (5.2.3 (e))**Fail** Nearside Rear Tyre not fitted in accordance with side wall instructions (5.2.3 (i))**Advice** Rear Sub-frame corroded but not seriously weakened (5.3.3 (b) (i))

**MOT #19**

2020-01-16 15:19

MOT test number

812443481166

Result

✓ Passed

- Advice** Offside Rear Tyre slightly damaged/cracking or perishing (5.2.3 (d) (ii))
- Advice** Brake pipe corroded, covered in grease or other material all rear brake pipes corroding (1.1.11 (c))
- Advice** Oil leak, but not excessive (8.4.1 (a) (i))
- Advice** Rear Sub-frame corroded but not seriously weakened (5.3.3 (b) (i))
- Advice** Offside Front Shock absorbers light misting of oil or has limited damping effect (5.3.2 (b))
- Advice** Offside Front Brake pipe corroded, covered in grease or other material (1.1.11 (c))
- Advice** Front Sub-frame corroded but not seriously weakened (5.3.3 (b) (i))
- Advice** Nearside Front Shock absorbers light misting of oil or has limited damping effect (5.3.2 (b))
- Minor** Upper Stop lamp(s) with a multiple light source up to 1/2 not functioning (4.3.1 (a) (i))
- Advice** Offside Rear Coil spring corroded (5.3.1 (b) (i))

**MOT #18**

2020-01-16 14:55

MOT test number

961692328866

Result**✗ Failed**

- Advice** Brake pipe corroded, covered in grease or other material all rear brake pipes corroding (1.1.11 (c))
- Advice** Engine management light on
- Fail** Exhaust carbon monoxide content after 2nd fast idle exceeds manufacturer's specified limits (8.2.1.2 (a))
- Advice** Rear Sub-frame corroded but not seriously weakened (5.3.3 (b) (i))
- Advice** Offside Front Shock absorbers light misting of oil or has limited damping effect (5.3.2 (b))
- Minor** Upper Stop lamp(s) with a multiple light source up to 1/2 not functioning (4.3.1 (a) (i))
- Advice** Offside Front Brake pipe corroded, covered in grease or other material (1.1.11 (c))
- Advice** Offside Rear Tyre slightly damaged/cracking or perishing (5.2.3 (d) (ii))
- Advice** Oil leak, but not excessive (8.4.1 (a) (i))
- Advice** Front Sub-frame corroded but not seriously weakened (5.3.3 (b) (i))
- Advice** Nearside Front Shock absorbers light misting of oil or has limited damping effect (5.3.2 (b))
- Advice** Offside Rear Coil spring corroded (5.3.1 (b) (i))



MOT #17

2019-01-11 14:31

MOT test number

331848362141

Result		✓ Passed
Advice	Brake pipe corroded, covered in grease or other material all rear pipes corroding (1.1.11 (c))	
Advice	Rear Sub-frame corroded but not seriously weakened (5.3.3 (b) (i))	
Advice	Oil leak, but not excessive (8.4.1 (a) (i))	
Minor	Upper Stop lamp(s) with a multiple light source up to 1/2 not functioning (4.3.1 (a) (i))	
Advice	Front Sub-frame corroded but not seriously weakened (5.3.3 (b) (i))	
Advice	Nearside Rear Tyre slightly damaged/cracking or perishing (5.2.3 (d) (ii))	
Advice	Offside Rear Coil spring corroded (5.3.1 (b) (i))	



MOT #16

2019-01-07 11:54

MOT test number

696623437318

Result		✖ Failed
Fail	Nearside Rear Coil spring fractured or broken (5.3.1 (b) (i))	
Advice	Oil leak, but not excessive (8.4.1 (a) (i))	
Fail	Exhaust carbon monoxide content after 2nd fast idle exceeds default limits (8.2.1.2 (b))	
Minor	Upper Stop lamp(s) with a multiple light source up to 1/2 not functioning (4.3.1 (a) (i))	
Fail	Offside Front Suspension arm corroded and seriously weakened (5.3.3 (b) (i))	
Advice	Front Sub-frame corroded but not seriously weakened (5.3.3 (b) (i))	
Advice	Nearside Rear Tyre slightly damaged/cracking or perishing (5.2.3 (d) (ii))	
Fail	Nearside Front Suspension arm corroded and seriously weakened (5.3.3 (b) (i))	
Advice	Offside Rear Coil spring corroded (5.3.1 (b) (i))	
Fail	Engine MIL inoperative or indicates a malfunction (8.2.1.2 (h))	
Advice	Brake pipe corroded, covered in grease or other material all rear pipes corroding (1.1.11 (c))	
Fail	Exhaust carbon monoxide content at idle exceeds default limits (8.2.1.2 (b))	
Advice	Rear Sub-frame corroded but not seriously weakened (5.3.3 (b) (i))	



MOT #152018-01-10 16:13

MOT test number292733058564

Result

✓ Passed

- Advice

Offside Rear coil spring corroded (2.4.C.1b)
- Advice

Nearside Front Suspension arm corroded but not seriously weakened (2.4.G.1)
- Advice

Nearside Rear Brake pipe slightly corroded (3.6.B.2c)
- Advice

Nearside Rear coil spring corroded (2.4.C.1b)
- Advice

Front Sub-frame corroded but not seriously weakened (2.4.G.1)
- Advice

Offside Front Suspension arm corroded but not seriously weakened (2.4.G.1)
- Advice

Offside Rear Brake pipe slightly corroded (3.6.B.2c)
- Advice

Central Stop lamp has light sources not illuminating, but not more than 50% (1.2.1b)

**MOT #14**

2018-01-08 10:40

MOT test number

560599960119

Result**✗ Failed**

- Advice** Front Sub-frame corroded but not seriously weakened (2.4.G.1)
- Fail** Nearside Windscreen washer provides insufficient washer liquid (8.2.3)
- Advice** Offside Front Suspension arm corroded but not seriously weakened (2.4.G.1)
- Fail** Exhaust emissions Lambda reading after 2nd fast idle outside specified limits (7.3.D.3)
- Advice** Offside Rear Brake pipe slightly corroded (3.6.B.2c)
- Advice** Central Stop lamp has light sources not illuminating, but not more than 50% (1.2.1b)
- Advice** Offside Rear coil spring corroded (2.4.C.1b)
- Advice** Engine management light on
- Advice** Nearside Front Suspension arm corroded but not seriously weakened (2.4.G.1)
- Fail** Offside Windscreen washer provides insufficient washer liquid (8.2.3)
- Advice** Nearside Rear Brake pipe slightly corroded (3.6.B.2c)
- Fail** Exhaust has a major leak of exhaust gases catalyst (7.1.2)
- Advice** Nearside Rear coil spring corroded (2.4.C.1b)

MOT #13

2017-01-05 12:16

MOT test number

444250330926

Result**✓ Passed****MOT #12**

2017-01-04 10:09

MOT test number

139551751555

Result**✗ Failed**

- Fail** Nearside Direction indicators not working (1.4.A.2c)



MOT #11	2016-01-13 09:49
----------------	------------------

MOT test number	711599984708
------------------------	--------------

Result	✓ Passed
---------------	----------

Advice	Offside Front Tyre worn close to the legal limit (4.1.E.1)
---------------	--

MOT #10	2015-01-14 12:06
----------------	------------------

MOT test number	639044215040
------------------------	--------------

Result	✓ Passed
---------------	----------

MOT #9	2013-12-16 14:53
---------------	------------------

MOT test number	809820453362
------------------------	--------------

Result	✓ Passed
---------------	----------

MOT #8	2012-12-20 13:37
---------------	------------------

MOT test number	545745452320
------------------------	--------------

Result	✓ Passed
---------------	----------

MOT #7	2011-12-19 14:17
---------------	------------------

MOT test number	125863451342
------------------------	--------------

Result	✓ Passed
---------------	----------

MOT #6	2010-12-20 12:14
---------------	------------------

MOT test number	404114850418
------------------------	--------------

Result	✓ Passed
---------------	----------

MOT #5	2009-12-21 11:27
---------------	------------------

MOT test number	543935759385
------------------------	--------------

Result	✓ Passed
---------------	----------



MOT #4 2008-12-12 09:27

MOT test number 823267348306

Result ✓ Passed

MOT #3 2008-01-10 16:45

MOT test number 791300618001

Result ✓ Passed

Advice Nearside Front Tyre worn close to the legal limit (4.1.E.1)

Advice Offside Front Tyre worn close to the legal limit (4.1.E.1)

MOT #2 2007-06-12 15:07

MOT test number 692983967119

Result ✓ Passed

MOT #1 2005-10-24 09:35

MOT test number 514007395251

Result ✓ Passed

Advice Tyre worn close to the legal limit (4.1.E.1)



Damage history

Check the damage history for this VOLKSWAGEN. See if, where and when this VOLKSWAGEN had damage and the car repair costs. We also check if this VOLKSWAGEN was scrapped. Download the premium report [here](#) for the results.

Damage 1

Date	
Category	
Type	

Damage 2

Date	
Category	
Type	



Extra VOLKSWAGEN salvage check



If this vehicle was seen at a salvage auction we offer: vehicle pictures, salvage location, retail value. Download the premium report [here](#) for more information.

More info >



Vehicle valuation

What is this car worth? See the vehicle value of this VOLKSWAGEN in the premium report. We check: purchase value, age, mileage, MOT history, damages and online sale prices.

Trade retail value	£ 19,999
Auction value	£ 19,999
Average private trade value	£ 19,999

More info >



Owner history

For how long did the current and previous owner(s) have this VOLKSWAGEN? How many owners did this VOLKSWAGEN have? Check it in the premium report and see all owner registrations. Download the full report [here](#).

*****	*****
*****	*****
*****	*****
*****	*****
*****	*****
*****	*****

More info >

Plate changes

See in this check if this VOLKSWAGEN had different number plates.

Number of plates	1
Current registration	 *****
Plate since	2019-06-29
Current registration	 *****
Plate since	2019-06-29

More info >



Finance check

Check if this VOLKSWAGEN is financed, has an outstanding loan or finance agreement. If you are purchasing a vehicle it is smart to ensure that any finance that may have been taken out on this VOLKSWAGEN has been settled.

If not, and you buy this VOLKSWAGEN then you could lose the money and the car you paid for.

Download the premium report [here](#) and check if this VOLKSWAGEN is financed.

Finance company	XXXXXXXXXX	XXXXXX
Date of agreement	XXXXXXXXXX	XXXXXX
Agreement type	XXXXXXXXXX	XXXXXX
Agreement term	XXXXXXXXXX	XXXXXX
Agreement number	XXXXXXXXXX	XXXXXX
Contact info	XXXXXXXXXX	XXXXXX

More info >



Mileage check

Odometer	In miles
Mileage registrations	24
First mileage registration	2001-09-20
Last registration	2022-01-04
Complete history	See info



Registration #1	2001-09-20	17 mi
Registration #2	2005-10-24	26.538 mi
Registration #3	2007-06-12	37.800 mi
Registration #4	2008-01-10	39.402 mi
Registration #5	2008-12-12	44.914 mi
Registration #6	2009-12-21	48.188 mi
Registration #7	2010-12-20	52.450 mi
Registration #8	2011-12-19	58.016 mi
Registration #9	2012-12-20	63.484 mi
Registration #10	2013-12-16	69.029 mi
Registration #11	2015-01-14	72.637 mi
Registration #12	2016-01-13	74.625 mi
Registration #13	2016-01-13	74.625 mi
Registration #14	2016-01-13	74.625 mi
Registration #15	2016-01-13	74.625 mi
Registration #16	2016-01-13	74.625 mi
Registration #17	2016-01-13	74.625 mi
Registration #18	2016-01-13	74.625 mi
Registration #19	2016-01-13	74.625 mi
Registration #20	2016-01-13	74.625 mi
Registration #21	2016-01-13	74.625 mi
Registration #22	2016-01-13	74.625 mi
Registration #23	2016-01-13	74.625 mi
Registration #24	2016-01-13	74.625 mi

More info >



Car features

The VOLKSWAGEN factory car options list is only available in the premium report.

S0225	Air conditioning
S0295	
S0482	
S0501	
S0566	
S0567	
S0569	

View the complete VOLKSWAGEN factory list for this vehicle [here](#).

More info >

Safety ratings

NCAP rating ★★★★★

Video [see crash video](#)



Dimensions & weight

Width	1860 mm
Height	1459 mm
Length	3527 mm
Wheel base	2321 mm

Additional information

Fuel tank capacity	34 l
Fuel delivery	Multi-Point Injection
Number of doors	3
Number of axles	2
Engine number	AUA010470