



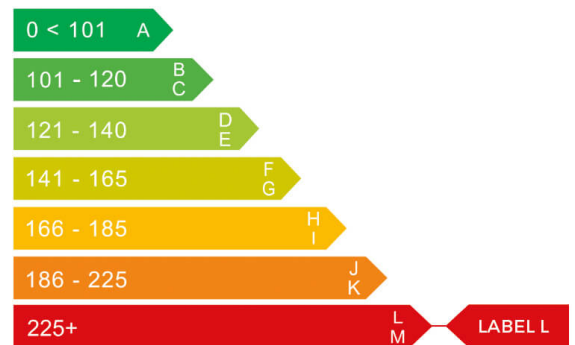
report date: 2024-03-29

General information

Make	VOLVO
Model	S60 T S S60
Colour	Blue
Year of manufacture	2002
Top speed	130 mph
0 - 60 mph	9.5 seconds
Gearbox	4 speed automatic

Engine & fuel consumption

Power	177 BHP
Max. torque	240 Nm at 2.200 rpm
Engine capacity	1.984 cc
Cylinders	5
Fuel type	Petrol
Consumption city	19.3 mpg
Consumption extra urban	37.7 mpg
Consumption combined	28.0 mpg
CO2 emission	240 g/km
CO2 label	L

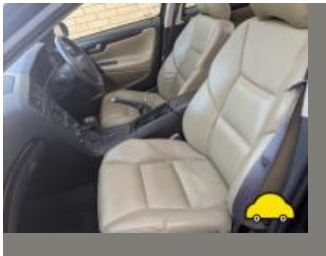
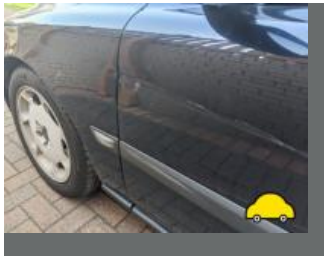




Internet history

Entry 1

Date	2021-09-11
Pictures	11
Listing price	View report



source: autotrader.co.uk



MOT history

MOT expiry date	2024-12-08
MOT pass rate	62 %
MOT passed	18
Failed MOT tests	11
Total advice items	109
Total items failed	35

MOT #29	2023-11-10 12:16
---------	------------------

MOT test number	231037223476
-----------------	--------------

Result	✓ Passed
Next expiry date	2024-12-08
Advice	Offside Front Suspension arm pin or bush worn but not resulting in excessive movement (5.3.4 (a) (i))
Advice	Offside Rear Tyre worn close to legal limit/worn on edge (5.2.3 (e))
Advice	Rear Anti-roll bar pin or bush worn but not resulting in excessive movement both (5.3.4 (a) (i))
Advice	Nearside Front Suspension arm pin or bush worn but not resulting in excessive movement (5.3.4 (a) (i))
Advice	Nearside Rear Tyre worn close to legal limit/worn on edge (5.2.3 (e))
Advice	All direction indicators slightly discoloured (4.4.3 (a))
Advice	Play in steering rack inner joint(s)
Advice	Offside Front Seat belt webbing slightly damaged or frayed (7.1.2 (b) (ii))
Advice	Oil leak, but not excessive (8.4.1 (a) (i))

**MOT #28**

2023-11-09 09:15

MOT test number

588537049553

Result**✗ Failed**

- Advice** Play in steering rack inner joint(s)
- Advice** Nearside Front Suspension arm pin or bush worn but not resulting in excessive movement (5.3.4 (a) (i))
- Advice** All direction indicators slightly discoloured (4.4.3 (a))
- Advice** Nearside Rear Tyre worn close to legal limit/worn on edge (5.2.3 (e))
- Fail** Nearside Windscreen wiper does not clear the windscreen effectively (3.4 (b) (ii))
- Advice** Offside Front Seat belt webbing slightly damaged or frayed (7.1.2 (b) (ii))
- Fail** Nearside Parking brake inoperative on one side (1.4.1 (a))
- Advice** Oil leak, but not excessive (8.4.1 (a) (i))
- Advice** Offside Front Suspension arm pin or bush worn but not resulting in excessive movement (5.3.4 (a) (i))
- Advice** Rear Anti-roll bar pin or bush worn but not resulting in excessive movement both (5.3.4 (a) (i))
- Advice** Offside Rear Tyre worn close to legal limit/worn on edge (5.2.3 (e))
- Fail** Engine MIL inoperative or indicates a malfunction (8.2.1.2 (h))
- Fail** Parking brake efficiency less than 50% of the required value (1.4.2 (a) (ii))
- Fail** Offside Parking brake inoperative on one side (1.4.1 (a))

**MOT #27**

2022-12-01 14:28

MOT test number

216899977068

Result

✓ Passed

Advice Offside Front Suspension arm pin or bush worn but not resulting in excessive movement (5.3.4 (a) (i))

Advice All direction indicators slightly discoloured (4.4.3 (a))

Advice Play in steering rack inner joint(s)

Advice Nearside Front Suspension arm pin or bush worn but not resulting in excessive movement (5.3.4 (a) (i))

Advice Nearside Track rod end ball joint has slight play (2.1.3 (b) (i))

MOT #26

2021-12-09 15:53

MOT test number

499394448493

Result

✓ Passed

Advice Offside Rear Integral body structure or chassis corroded within 30cm of a mounting, but not seriously affecting overall security (6.2.2 (d) (i))

Advice Offside Rear Brake hose slightly deteriorated (1.1.12 (b) (ii))

Advice Nearside Rear Anti-roll bar linkage corroded but not seriously weakened (5.3.3 (b) (i))

Advice Nearside Rear Integral body structure or chassis corroded within 30cm of a mounting, but not seriously affecting overall security (6.2.2 (d) (i))

Advice Nearside Rear Brake hose slightly deteriorated (1.1.12 (b) (ii))

Advice Nearside Track rod end ball joint has slight play (2.1.3 (b) (i))

Advice Offside Rear Anti-roll bar linkage corroded but not seriously weakened (5.3.3 (b) (i))

**MOT #25**

2021-12-07 15:55

MOT test number

907242268688

Result**✗ Failed**

Advice Nearside Rear Integral body structure or chassis corroded within 30cm of a mounting, but not seriously affecting overall security (6.2.2 (d) (i))

Fail Parking brake efficiency below requirements (1.4.2 (a) (i))

Fail Nearside Rear Shock absorbers has a serious fluid leak (5.3.2 (b))

Fail Offside Front Suspension arm ball joint excessively worn (5.3.4 (a) (i))

Advice Nearside Track rod end ball joint has slight play (2.1.3 (b) (i))

Advice Nearside Rear Brake hose slightly deteriorated (1.1.12 (b) (ii))

Advice Offside Rear Anti-roll bar linkage corroded but not seriously weakened (5.3.3 (b) (i))

Fail Nearside Headlamp aim projected beam image is obviously incorrect (4.1.2 (c))

Advice Offside Rear Integral body structure or chassis corroded within 30cm of a mounting, but not seriously affecting overall security (6.2.2 (d) (i))

Fail Offside Rear Shock absorbers has negligible damping effect (5.3.2 (d))

Fail Offside Front Track rod end ball joint has excessive play (2.1.3 (b) (i))

Fail Nearside Front Brake hose excessively deteriorated (1.1.12 (b) (ii))

Advice Nearside Rear Anti-roll bar linkage corroded but not seriously weakened (5.3.3 (b) (i))

Advice Offside Rear Brake hose slightly deteriorated (1.1.12 (b) (ii))

**MOT #24**

2020-12-03 15:09

MOT test number

148332788208

Result

✓ Passed

- Advice** Front Brake disc worn, pitted or scored, but not seriously weakened (1.1.14 (a) (ii))
- Advice** Offside Front Suspension arm pin or bush worn but not resulting in excessive movement (5.3.4 (a) (i))
- Advice** Nearside Rear Anti-roll bar linkage ball joint has slight play (5.3.4 (a) (i))
- Advice** Nearside Front Suspension arm pin or bush worn but not resulting in excessive movement (5.3.4 (a) (i))
- Advice** Rear Brake disc worn, pitted or scored, but not seriously weakened (1.1.14 (a) (ii))
- Advice** Rear Anti-roll bar pin or bush worn but not resulting in excessive movement (5.3.4 (a) (i))
- Advice** Play in steering rack inner joint(s)

MOT #23

2019-12-05 10:14

MOT test number

998757507801

Result

✓ Passed

- Advice** Offside Rear Anti-roll bar linkage ball joint has slight play (5.3.4 (a) (i))
- Advice** Play in steering rack inner joint(s) both sides
- Advice** Nearside Rear Anti-roll bar linkage ball joint has slight play (5.3.4 (a) (i))
- Advice** Exhaust has a minor leak of exhaust gases (6.1.2 (a))

MOT #22

2018-12-07 08:18

MOT test number

878093875315

Result

✓ Passed

- Advice** Rear Parking brake efficiency only just met. It would appear that the braking system requires adjustment or repair. (1.4.2 (a) (i))

**MOT #21**

2018-12-05 12:40

MOT test number

972841859423

Result**✗ Failed****Fail** Nearside Front Suspension component ball joint excessively worn (5.3.4 (a) (i))**Advice** Rear Parking brake efficiency only just met. It would appear that the braking system requires adjustment or repair. (1.4.2 (a) (i))**MOT #20**

2017-10-24 09:55

MOT test number

333654678384

Result**✓ Passed****Advice** Rear registration plate delaminated but not likely to be misread (6.3.1d)**Advice** Offside Front Steering system has slight free play detected at steering wheel INNER TRACKROD PLAY (2.2.A.1b)**Advice** Offside Rear Suspension arm corroded but not seriously weakened (2.4.G.1)**Advice** Front registration plate delaminated but not likely to be misread (6.3.1d)**Advice** Nearside Front Steering system has slight free play detected at steering wheel INNER TRACKRODSLIGHT PLAY (2.2.A.1b)**Advice** Nearside Rear Suspension arm corroded but not seriously weakened (2.4.G.1)**MOT #19**

2017-10-24 09:55

MOT test number

990561351898

Result**✗ Failed****Advice** Nearside Front Steering system has slight free play detected at steering wheel INNER TRACKRODSLIGHT PLAY (2.2.A.1b)**Advice** Nearside Rear Suspension arm corroded but not seriously weakened (2.4.G.1)**Advice** Front registration plate delaminated but not likely to be misread (6.3.1d)**Advice** Offside Front Steering system has slight free play detected at steering wheel INNER TRACKROD PLAY (2.2.A.1b)**Advice** Offside Rear Suspension arm corroded but not seriously weakened (2.4.G.1)**Pass with rectification** Registration plate lamp not working (1.1.C.1d)**Advice** Rear registration plate delaminated but not likely to be misread (6.3.1d)



MOT #18	2016-10-24 07:07
MOT test number	570937095920
Result	✓ Passed
Advice	Nearside Front anti roll/bar drop link slight play
Advice	Registration plate deteriorated but not likely to be misread front and rear (6.3.1d)
Advice	O/s parking brake reading low

MOT #17	2015-04-20 13:01
MOT test number	928010815101
Result	✓ Passed
Advice	Nearside Front Direction indicators slightly discoloured (1.4.A.2f)
Advice	Rear registration plate deteriorated but not likely to be misread (6.3.1d)
Advice	Front Brake hose slightly deteriorated (3.6.B.4d)
Advice	Offside Front Direction indicators slightly discoloured (1.4.A.2f)

**MOT #16**

2015-04-17 14:16

MOT test number

605827905198

Result**✗ Failed**

- Advice** Offside rear brake fluctuating, but not excessively (3.7.B.3)
- Fail** Offside Rear Tyre has ply or cords exposed (4.1.D.1b)
- Fail** Nearside rear brake excessively fluctuating (3.7.B.3)
- Advice** Offside Front Direction indicators slightly discoloured (1.4.A.2f)
- Fail** Nearside Macpherson strut has excessive movement at the upper attachment (2.5.A.1c)
- Advice** Offside Rear brake disc worn, pitted or scored, but not seriously weakened (3.5.1i)
- Fail** Nearside Rear Tyre has ply or cords exposed (4.1.D.1b)
- Fail** Nearside Rear brake disc in such a condition that it is seriously weakened (3.5.1i)
- Advice** Nearside Front Direction indicators slightly discoloured (1.4.A.2f)
- Advice** Rear registration plate deteriorated but not likely to be misread (6.3.1d)
- Fail** Offside Front constant velocity joint gaiter insecure to the extent that it no longer prevents the ingress of dirt etc (2.5.C.1a)

MOT #15

2013-09-18 17:20

MOT test number

218781863284

Result**✓ Passed**

- Advice** Offside Front Suspension arm rubber bush deteriorated but not resulting in excessive movement (2.4.G.2)
- Advice** Rear registration plate deteriorated but not likely to be misread (6.3.1d)
- Advice** Offside Rear brake disc worn, pitted or scored, but not seriously weakened (3.5.1i)
- Advice** Nearside Front Brake hose slightly deteriorated (3.6.B.4d)
- Notice** Temporary fuel cap fitted
- Advice** Nearside Rear brake disc worn, pitted or scored, but not seriously weakened (3.5.1i)



MOT #14

2013-09-18 16:03

MOT test number

988751663281

Result

✗ Failed

- Fail

Fuel cap/sealing device sealing washer deteriorated (7.2.4c)
- Notice

Rear exhaust hanger broken
- Advice

Rear registration plate deteriorated but not likely to be misread (6.3.1d)
- Advice

Offside Rear brake disc worn, pitted or scored, but not seriously weakened (3.5.1i)
- Advice

Nearside Front Brake hose slightly deteriorated (3.6.B.4d)
- Fail

Nearside Front suspension ball joint dust cover excessively damaged so that it no longer prevents the ingress of dirt (2.4.G.2)
- Advice

Nearside Rear brake disc worn, pitted or scored, but not seriously weakened (3.5.1i)
- Advice

Offside Front Suspension arm rubber bush deteriorated but not resulting in excessive movement (2.4.G.2)

MOT #13

2012-10-16 12:35

MOT test number

888020392237

Result

✓ Passed

- Advice

Rear registration plate deteriorated but not likely to be misread (6.3.1d)
- Notice

Osf tyre outer sidewall cut
- Notice

Child seat fitted not allowing full inspection of adult belt
- Notice

Nsr brake discs heavily corroded

**MOT #12**

2011-12-21 10:05

MOT test number

858265351388

Result

✓ Passed

- Advice** Offside Front Suspension arm has slight play in a pin/bush (2.4.G.2)
- Advice** Exhaust has part of the system slightly deteriorated (7.1.1a)
- Notice** Corrosion and wear starting on rear brake discs
- Advice** Nearside Front Suspension arm has slight play in a pin/bush (2.4.G.2)
- Advice** Rear Exhaust has a minor leak of exhaust gases (7.1.2)

MOT #11

2011-12-20 17:00

MOT test number

407144151315

Result

✗ Failed

- Fail** Nearside Front suspension has excessive play in a lower suspension ball joint (2.5.B.1a)
- Notice** Corrosion and wear starting on rear brake discs
- Advice** Offside Front Suspension arm has slight play in a pin/bush (2.4.G.2)
- Advice** Exhaust has part of the system slightly deteriorated (7.1.1a)
- Advice** Nearside Front Suspension arm has slight play in a pin/bush (2.4.G.2)
- Advice** Rear Exhaust has a minor leak of exhaust gases (7.1.2)

MOT #10

2010-12-13 16:56

MOT test number

753067840385

Result

✓ Passed

- Advice** Nearside Front Tyre worn close to the legal limit (4.1.E.1)
- Advice** Exhaust has part of the system slightly deteriorated (7.1.1a)

**MOT #9** 2009-12-22 15:29**MOT test number** 672226859344**Result** ✓ Passed**MOT #8** 2009-12-22 15:29**MOT test number** 583276659326**Result** ✗ Failed**Pass with rectification** Nearside Registration plate lamp not working (1.1.5c)**Pass with rectification** Nearside Stop lamp not working (1.2.1b)**MOT #7** 2008-11-28 15:58**MOT test number** 273293238362**Result** ✓ Passed**MOT #6** 2008-11-28 14:53**MOT test number** 792993038383**Result** ✗ Failed**Advice** Offside Front Suspension arm rubber bush deteriorated but not resulting in excessive movement (2.4.G.2)**Fail** Offside Rear Anti-roll bar linkage has excessive play in a pin/bush (2.4.G.2)**Advice** Brake disc slightly pitted (3.5.1h)**Fail** Nearside Lower Rear position lamp(s) excessively deteriorated so that it is not visible from a reasonable distance (1.1.A.3d)**Fail** Nearside Front Tyre tread depth below requirements of 1.6mm (4.1.E.1)**Advice** Front Suspension arm rubber bush deteriorated but not resulting in excessive movement (2.4.G.2)**Advice** Front Brake pad(s) wearing thin (3.5.1g)**Fail** Offside Windscreen wiper does not clear the windscreen effectively (8.2.2)**Fail** Offside Front Tyre tread depth below requirements of 1.6mm (4.1.E.1)**Pass with rectification** Nearside Headlamp aim too low (1.8)

**MOT #5** 2007-10-26 15:00**MOT test number** 300139597296**Result** ✓ Passed**Notice** Rearmost bush on offside front wishbone is starting to split away**MOT #4** 2007-10-26 15:00**MOT test number** 321319697285**Result** ✗ Failed**Pass with rectification** Nearside Headlamp not working on dipped beam (1.7.5a)**Pass with rectification** Nearside Front position lamp(s) not in good working order (function impaired)
(1.1.4a)**Notice** Rearmost bush on offside front wishbone is starting to split away**Pass with rectification** Offside Headlamp not working on dipped beam (1.7.5a)**MOT #3** 2007-07-09 14:57**MOT test number** 611070797110**Result** ✓ Passed**MOT #2** 2005-11-04 11:52**MOT test number** 212368305358**Result** ✓ Passed**MOT #1** 2005-11-04 09:42**MOT test number** 243968105398**Result** ✗ Failed**Fail** Rear Tyre tread depth below requirements of 1.6mm (4.1.E.1)**Advice** Front Tyre worn close to the legal limit (4.1.E.1)



Tax & MOT check

✓
Taxed
Tax due:
1 October 2024

✓
MOT
Expires:
8 December 2024

Tax status	Valid until 1 October
Days left	156
MOT expiry date	8 December 2024
Full MOT history	See MOT history

Tax calculation

Vehicle class	48
Band	K
Single payment (12 months)	£ 395,00,-
Single six month payment	£ 217,25,-
Total payable by 12 monthly instalments	£ 414,75,-



Damage history

Check the damage history for this VOLVO. See if, where and when this VOLVO had damage and the car repair costs. We also check if this VOLVO was scrapped. Download the premium report [here](#) for the results.

Damage 1

Date	
Category	
Type	



Damage 2

Date	
Category	
Type	



Extra VOLVO salvage check



If this vehicle was seen at a salvage auction we offer: vehicle pictures, salvage location, retail value. Download the premium report [here](#) for more information.

More info >



Vehicle valuation

What is this car worth? See the vehicle value of this VOLVO in the premium report. We check: purchase value, age, mileage, MOT history, damages and online sale prices.

Trade retail value	£ 19,999
Auction value	£ 19,999
Average private trade value	£ 19,999

More info >



Owner history

For how long did the current and previous owner(s) have this VOLVO? How many owners did this VOLVO have? Check it in the premium report and see all owner registrations. Download the full report [here](#).

Owner	Registration
Owner	Registration
Owner	Registration
Owner	Registration
Owner	Registration
Owner	Registration
Owner	Registration

More info >

Plate changes

See in this check if this VOLVO had different number plates.

Number of plates	1
Current registration	OY52CKU
Plate since	2019-09-29
Current registration	OY52CKU
Plate since	2019-09-29

More info >



Finance check

Check if this VOLVO is financed, has an outstanding loan or finance agreement. If you are purchasing a vehicle it is smart to ensure that any finance that may have been taken out on this VOLVO has been settled.

If not, and you buy this VOLVO then you could lose the money and the car you paid for.

Download the premium report [here](#) and check if this VOLVO is financed.

Finance company	XXXXXXXXXX	XXXX
Date of agreement	XXXXXXXXXX	XXXX
Agreement type	XXXXXXXXXX	XXXX
Agreement term	XXXXXXXXXX	XXXX
Agreement number	XXXXXXXXXX	XXXX
Contact info	XXXXXXXXXX	XXXX

More info >



Mileage check

Odometer	In miles
Mileage registrations	29
First mileage registration	2002-09-24
Last registration	2023-11-10
Complete history	See info



Registration #1	2002-09-24	10 mi
Registration #2	2005-11-04	24.258 mi
Registration #3	2005-11-04	24.258 mi
Registration #4	2007-07-09	40.480 mi
Registration #5	2007-10-26	45.488 mi
Registration #6	2008-11-28	58.348 mi
Registration #7	2008-11-28	58.348 mi
Registration #8	2009-12-22	70.310 mi
Registration #9	2010-12-13	76.403 mi
Registration #10	2011-12-20	89.035 mi
Registration #11	2011-12-21	89.035 mi
Registration #12	2012-10-16	97.352 mi
Registration #13	2013-09-18	108.429 mi
Registration #14	2013-09-18	108.429 mi
Registration #15	2015-04-17	118.828 mi
Registration #16	2015-05-20	121.217 mi
Registration #17	2015-05-20	121.217 mi
Registration #18	2015-05-20	121.217 mi
Registration #19	2015-05-20	121.217 mi
Registration #20	2015-05-20	121.217 mi
Registration #21	2015-05-20	121.217 mi
Registration #22	2015-05-20	121.217 mi
Registration #23	2015-05-20	121.217 mi
Registration #24	2015-05-20	121.217 mi
Registration #25	2015-05-20	121.217 mi
Registration #26	2015-05-20	121.217 mi

Registration #27	2025-25-25	25,252,442
Registration #28	2025-25-25	25,252,442
Registration #29	2025-25-25	25,252,442

More info >



Car features

The VOLVO factory car options list is only available in the premium report.

S0225	Air conditioning
S0295	
S0482	
S0501	
S0566	
S0567	
S0569	

View the complete VOLVO factory list for this vehicle [here](#).

More info >

Safety ratings

NCAP rating

Video [see crash video](#)



Dimensions & weight

Width	1803 mm
Height	1422 mm
Length	4572 mm
Wheel base	2715 mm
Kerb weight	1427 kg

Additional information

Fuel tank capacity	70 l
Fuel delivery	Multi-Point Injection
Number of doors	4
Number of axles	2
Engine number	2720968