



TOYOTA



report date: 2024-03-29

General information

Make	TOYOTA
Model	VERSO VALVEMATIC T2
Colour	Silver
Year of manufacture	2011
Top speed	115 mph
0 - 60 mph	11.7 seconds
Gearbox	6 speed Manual

Engine & fuel consumption

Power	132 BHP
Max. torque	160 Nm at 4.400 rpm
Engine capacity	1.596 cc
Cylinders	4
Fuel type	Petrol
Consumption city	32.8 mpg
Consumption extra urban	48.7 mpg
Consumption combined	41.5 mpg
CO2 emission	158 g/km
CO2 label	G

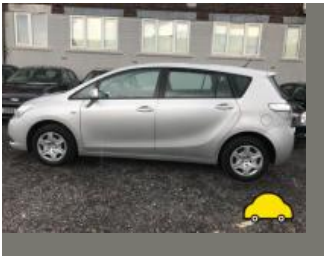




Internet history

Entry 1

Date	2021-07-31
Pictures	4
Listing price	<a href="#">View report</a>



source: autotrader.co.uk



## MOT history

MOT expiry date	2025-03-27
MOT pass rate	61 %
MOT passed	11
Failed MOT tests	7
Total advice items	313
Total items failed	23

MOT #18	2024-03-28 14:40
MOT test number	966181445163
Result	✓ Passed
Next expiry date	2025-03-27

MOT #17	2023-03-15 10:33
MOT test number	902172239920
Result	✓ Passed
Advice	Oil leak, but not excessive (8.4.1 (a) (i))
Minor	Rear Registration plate lamp inoperative in the case of multiple lamps or light sources (4.7.1 (b) (i))
Minor	Front Anti-roll bar linkage ball joint dust cover severely deteriorated both sides (5.3.4 (b) (i))

MOT #16	2022-03-14 13:10
MOT test number	441113665498
Result	✓ Passed
Advice	Front Lower Suspension arm pin or bush worn but not resulting in excessive movement rear (5.3.4 (a) (i))

**MOT #15**

2021-02-25 12:45

**MOT test number**

270625462644

**Result**

✓ Passed

- Advice** Nearside Rear Brake hose slightly deteriorated (1.1.12 (b) (ii))
- Advice** Nearside Rear Coil spring corroded (5.3.1 (b) (i))
- Advice** Nearside Front Lower Suspension arm corroded but not seriously weakened (5.3.3 (b) (i))
- Advice** BOTH FRONT HEADLAMP AIMS ARE AT THERE HIGHEST ACCEPITABLE LEVEL
- Advice** Nearside Rear Brake hose has slight corrosion to ferrule (1.1.12 (f) (i))
- Advice** Offside Front Anti-roll bar linkage corroded but not seriously weakened (5.3.3 (b) (i))
- Advice** Offside Rear Brake hose has slight corrosion to ferrule (1.1.12 (f) (i))
- Advice** Offside Rear Coil spring corroded (5.3.1 (b) (i))
- Advice** Nearside Front Lower Suspension arm pin or bush worn but not resulting in excessive movement  
INNER REAR BUSH (5.3.4 (a) (i))
- Advice** APPLIED FINGER AND THUMB PRESSURE ON SILLS AND FLOOR AREA
- Advice** Nearside Front Macpherson strut corroded but not seriously weakened (5.3.3 (b) (i))
- Advice** Offside Rear Brake hose slightly deteriorated (1.1.12 (b) (ii))
- Advice** Nearside Rear Shock absorbers has slight external damage to the casing CORRODED (5.3.2 (b))
- Advice** BOTH FRONT STRUTS ARE SLIGHTLY STIFF
- Advice** Nearside Front Upper Macpherson strut pin or bush worn but not resulting in excessive movement  
(5.3.4 (a) (i))
- Advice** Nearside Front Brake hose slightly deteriorated (1.1.12 (b) (ii))
- Advice** Nearside Front Coil spring corroded (5.3.1 (b) (i))
- Advice** MOST OF THE BRAKE PIPES ARE PLASTIC COATED
- Advice** Front Sub-frame corroded but not seriously weakened (5.3.3 (b) (i))
- Advice** BOTH FRONT STRUTS ARE SLIGHTLY STIFF
- Advice** Nearside Front Brake hose has slight corrosion to ferrule (1.1.12 (f) (i))
- Advice** Nearside Front Anti-roll bar linkage corroded but not seriously weakened (5.3.3 (b) (i))
- Advice** Offside Front Brake hose has slight corrosion to ferrule (1.1.12 (f) (i))
- Advice** Offside Front Coil spring corroded (5.3.1 (b) (i))
- Advice** Offside Front Lower Suspension arm corroded but not seriously weakened (5.3.3 (b) (i))

**Advice** PLASTIC SILL AND ENGINE COVERS

**Advice** Nearside Macpherson strut corroded but not seriously weakened (5.3.3 (b) (i))

**Advice** Offside Front Brake hose slightly deteriorated (1.1.12 (b) (ii))

**Advice** Offside Front Lower Suspension arm pin or bush worn but not resulting in excessive movement  
INNER REAR BUSH (5.3.4 (a) (i))

**Advice** REAR STEEL BAR SNAPPED OFF.

**Advice** Offside Front Macpherson strut corroded but not seriously weakened (5.3.3 (b) (i))

**Advice** Front Anti-roll bar corroded but not seriously weakened (5.3.3 (b) (i))

**Advice** Offside Rear Shock absorbers has slight external damage to the casing CORRODED (5.3.2 (b))

**Advice** ALL FOUR BRAKE DISCS ARE WORN PITTED AND CORRODED

**Advice** SLIGHT TRAVEL ON HANDBRAKE LEVER

**Advice** Offside Front Upper Macpherson strut pin or bush worn but not resulting in excessive movement  
(5.3.4 (a) (i))



MOT #14

2021-02-25 08:41

MOT test number

745531541304

Result

✖ Failed

- Advice

Offside Front Anti-roll bar linkage corroded but not seriously weakened (5.3.3 (b) (i))
- Advice

Offside Rear Coil spring corroded (5.3.1 (b) (i))
- Advice

Offside Front Brake hose has slight corrosion to ferrule (1.1.12 (f) (i))
- Advice

Nearside Front Lower Suspension arm pin or bush worn but not resulting in excessive movement  
INNER REAR BUSH (5.3.4 (a) (i))
- Advice

PLASTIC SILL AND ENGINE COVERS
- Advice

Nearside Front Macpherson strut corroded but not seriously weakened (5.3.3 (b) (i))
- Advice

Offside Front Brake hose slightly deteriorated (1.1.12 (b) (ii))
- Advice

Nearside Rear Shock absorbers has slight external damage to the casing CORRODED (5.3.2 (b))
- Advice

REAR STEEL BAR SNAPPED OFF.
- Fail

Offside Rear Service brake excessively binding (1.2.1 (f))
- Advice

Nearside Front Upper Macpherson strut pin or bush worn but not resulting in excessive movement  
(5.3.4 (a) (i))
- Fail

Nearside Front Position lamp not working (4.2.1 (a) (ii))
- Advice

Nearside Front Coil spring corroded (5.3.1 (b) (i))
- Advice

ALL FOUR BRAKE DISCS ARE WORN PITTED AND CORRODED
- Advice

Nearside Rear Brake hose has slight corrosion to ferrule (1.1.12 (f) (i))
- Advice

Front Sub-frame corroded but not seriously weakened (5.3.3 (b) (i))
- Advice

SLIGHT TRAVEL ON HANDBRAKE LEVER
- Advice

Nearside Front Anti-roll bar linkage corroded but not seriously weakened (5.3.3 (b) (i))
- Advice

Offside Front Coil spring corroded (5.3.1 (b) (i))
- Advice

BOTH FRONT HEADLAMP AIMS ARE AT THERE HIGHEST ACCEPITABLE LEVEL
- Advice

Nearside Rear Brake hose slightly deteriorated (1.1.12 (b) (ii))
- Advice

Offside Front Lower Suspension arm corroded but not seriously weakened (5.3.3 (b) (i))
- Advice

Nearside Macpherson strut corroded but not seriously weakened (5.3.3 (b) (i))
- Advice

Offside Rear Brake hose has slight corrosion to ferrule (1.1.12 (f) (i))
- Advice

Offside Front Lower Suspension arm pin or bush worn but not resulting in excessive movement

INNER REAR BUSH (5.3.4 (a) (i))

**Advice** APPLIED FINGER AND THUMB PRESSURE ON SILLS AND FLOOR AREA

**Fail** Parking brake efficiency below requirements (1.4.2 (a) (i))

**Advice** Offside Front Macpherson strut corroded but not seriously weakened (5.3.3 (b) (i))

**Minor** Offside Rear Registration plate lamp inoperative in the case of multiple lamps or light sources (4.7.1 (b) (i))

**Advice** Offside Rear Brake hose slightly deteriorated (1.1.12 (b) (ii))

**Advice** Offside Rear Shock absorbers has slight external damage to the casing CORRODED (5.3.2 (b))

**Advice** BOTH FRONT STRUTS ARE SLIGHTLY STIFF

**Advice** Nearside Front Brake hose has slight corrosion to ferrule (1.1.12 (f) (i))

**Advice** Offside Front Upper Macpherson strut pin or bush worn but not resulting in excessive movement (5.3.4 (a) (i))

**Advice** Front Anti-roll bar corroded but not seriously weakened (5.3.3 (b) (i))

**Advice** Nearside Rear Coil spring corroded (5.3.1 (b) (i))

**Advice** MOST OF THE BRAKE PIPES ARE PLASTIC COATED

**Advice** Nearside Front Brake hose slightly deteriorated (1.1.12 (b) (ii))

**Advice** Nearside Front Lower Suspension arm corroded but not seriously weakened (5.3.3 (b) (i))

**Advice** BOTH FRONT STRUTS ARE SLIGHTLY STIFF



MOT #13

2020-02-19 15:49

MOT test number

225208592568

Result

✓ Passed

- Advice

Offside Rear Coil spring corroded (5.3.1 (b) (i))
- Advice

Nearside Front Suspension arm corroded but not seriously weakened (5.3.3 (b) (i))
- Advice

Offside Rear Shock absorbers has slight external damage to the casing Corroded (5.3.2 (b))
- Advice

Nearside Front Anti-roll bar linkage corroded but not seriously weakened (5.3.3 (b) (i))
- Advice

Offside Rear Brake pipe corroded, covered in grease or other material At flexi hose to flexi hose corroded (1.1.11 (c))
- Advice

Offside Front Macpherson strut corroded but not seriously weakened (5.3.3 (b) (i))
- Advice

Rear Brake disc worn, but not excessively (1.1.14 (a) (i))
- Advice

Nearside Rear Coil spring corroded (5.3.1 (b) (i))
- Advice

Nearside Rear Shock absorbers has slight external damage to the casing Corroded (5.3.2 (b))
- Advice

Offside Front Suspension arm corroded but not seriously weakened (5.3.3 (b) (i))
- Advice

Nearside Rear Brake pipe corroded, covered in grease or other material At flexi hose to flexi hose corroded (1.1.11 (c))
- Advice

Nearside Front Macpherson strut corroded but not seriously weakened (5.3.3 (b) (i))
- Advice

Front Brake disc worn, but not excessively (1.1.14 (a) (i))
- Advice

Vehicle fitted with side skirts and engine undertray obscuring the view of some components
- Advice

Offside Front Coil spring corroded (5.3.1 (b) (i))



**MOT #12**

2020-02-19 09:22

**MOT test number**

315432518493

**Result****✗ Failed**

- Advice** Nearside Front Suspension arm corroded but not seriously weakened (5.3.3 (b) (i))
- Fail** Nearside Front Position lamp not working (4.2.1 (a) (ii))
- Advice** Offside Rear Shock absorbers has slight external damage to the casing Corroded (5.3.2 (b))
- Advice** Nearside Front Anti-roll bar linkage corroded but not seriously weakened (5.3.3 (b) (i))
- Fail** Offside Rear Registration plate lamp inoperative in the case of a single lamp or all lamps (4.7.1 (b) (ii))
- Fail** Offside Front Tyre tread depth below requirements of 1.6mm 205/60/16 (5.2.3 (e))
- Advice** Vehicle fitted with side skirts and engine undertray obscuring the view of some components
- Advice** Offside Front Macpherson strut corroded but not seriously weakened (5.3.3 (b) (i))
- Advice** Offside Rear Brake pipe corroded, covered in grease or other material At flexi hose to flexi hose corroded (1.1.11 (c))
- Advice** Nearside Rear Coil spring corroded (5.3.1 (b) (i))
- Advice** Rear Brake disc worn, but not excessively (1.1.14 (a) (i))
- Advice** Nearside Rear Shock absorbers has slight external damage to the casing Corroded (5.3.2 (b))
- Advice** Offside Front Suspension arm corroded but not seriously weakened (5.3.3 (b) (i))
- Fail** Nearside Rear Registration plate lamp inoperative in the case of a single lamp or all lamps (4.7.1 (b) (ii))
- Fail** Nearside Front Tyre tread depth below requirements of 1.6mm 205/60/16 (5.2.3 (e))
- Advice** Nearside Front Macpherson strut corroded but not seriously weakened (5.3.3 (b) (i))
- Advice** Nearside Rear Brake pipe corroded, covered in grease or other material At flexi hose to flexi hose corroded (1.1.11 (c))
- Advice** Offside Front Coil spring corroded (5.3.1 (b) (i))
- Advice** Front Brake disc worn, but not excessively (1.1.14 (a) (i))
- Advice** Offside Rear Coil spring corroded (5.3.1 (b) (i))



MOT #11	2019-03-08 12:45
MOT test number	915537362861
Result	✓ Passed

- Advice** Offside Rear Shock absorbers has slight external damage to the casing CORRODED (5.3.2 (b))
- Advice** Offside Rear Brake hose slightly deteriorated (1.1.12 (b) (ii))
- Advice** BOTH FRONT HEADLAMP AIMS ARE AT THERE HIGHEST ACCEPITABLE LEVEL
- Advice** Nearside Front Brake hose has slight corrosion to ferrule (1.1.12 (f) (i))
- Advice** Offside Front Macpherson strut corroded but not seriously weakened (5.3.3 (b) (i))
- Advice** Offside Front Lower Suspension arm corroded but not seriously weakened (5.3.3 (b) (i))
- Advice** Offside Front Brake hose has slight corrosion to ferrule (1.1.12 (f) (i))
- Advice** Nearside Rear Coil spring corroded (5.3.1 (b) (i))
- Advice** BOTH FRONT STRUTS ARE SLIGHTLY STIFF
- Advice** Nearside Front Anti-roll bar linkage corroded but not seriously weakened (5.3.3 (b) (i))
- Advice** Nearside Front Brake hose slightly deteriorated (1.1.12 (b) (ii))
- Advice** Offside Rear Coil spring corroded (5.3.1 (b) (i))
- Advice** BOTH FRONT BRAKE DISCS ARE WORN
- Advice** Nearside Rear Shock absorbers has slight external damage to the casing CORRODED (5.3.2 (b))
- Advice** PLASTIC SILL AND ENGINE COVERS
- Advice** Offside Front Brake hose slightly deteriorated (1.1.12 (b) (ii))
- Advice** Offside Rear Direction indicator slightly discoloured (4.4.3 (a))
- Advice** Nearside Front Macpherson strut corroded but not seriously weakened (5.3.3 (b) (i))
- Advice** Nearside Front Lower Suspension arm corroded but not seriously weakened (5.3.3 (b) (i))
- Advice** Nearside Rear Brake hose has slight corrosion to ferrule (1.1.12 (f) (i))
- Advice** Nearside Front Coil spring corroded (5.3.1 (b) (i))
- Advice** BODY WORK DAMAGE
- Advice** Front Anti-roll bar corroded but not seriously weakened (5.3.3 (b) (i))
- Advice** Offside Rear Brake hose has slight corrosion to ferrule (1.1.12 (f) (i))
- Advice** Offside Front Coil spring corroded (5.3.1 (b) (i))
- Advice** BOTH FRONT STRUTS ARE SLIGHTLY STIFF
- Advice** Offside Front Anti-roll bar linkage corroded but not seriously weakened (5.3.3 (b) (i))
- Advice** Nearside Rear Brake hose slightly deteriorated (1.1.12 (b) (ii))
- Advice** Nearside Rear Direction indicator slightly discoloured (4.4.3 (a))
- Advice** BOTH REAR BRAKE DISCS ARE WORN





MOT #10

2019-03-08 09:01

MOT test number

503466850801

Result

✖ Failed

Advice	Rear Brake pad(s) wearing thin (1.1.13 (a) (ii))
Advice	Offside Front Anti-roll bar linkage corroded but not seriously weakened (5.3.3 (b) (i))
Advice	BOTH REAR BRAKE DISCS ARE WORN
Advice	Offside Rear Brake hose slightly deteriorated (1.1.12 (b) (ii))
Advice	Nearside Rear Direction indicator slightly discoloured (4.4.3 (a))
Advice	Nearside Front Brake hose has slight corrosion to ferrule (1.1.12 (f) (i))
Advice	Offside Rear Shock absorbers has slight external damage to the casing CORRODED (5.3.2 (b))
Advice	BOTH FRONT HEADLAMP AIMS ARE AT THERE HIGHEST ACCEPTABLE LEVEL
Fail	Offside Rear Service brake excessively binding (1.2.1 (f))
Advice	Offside Front Brake hose has slight corrosion to ferrule (1.1.12 (f) (i))
Advice	Offside Front Macpherson strut corroded but not seriously weakened (5.3.3 (b) (i))
Advice	BOTH FRONT STRUTS ARE SLIGHTLY STIFF
Advice	Offside Front Lower Suspension arm corroded but not seriously weakened (5.3.3 (b) (i))
Advice	Nearside Front Brake hose slightly deteriorated (1.1.12 (b) (ii))
Advice	Nearside Rear Coil spring corroded (5.3.1 (b) (i))
Advice	Front Brake pad(s) wearing thin (1.1.13 (a) (ii))
Advice	Nearside Front Anti-roll bar linkage corroded but not seriously weakened (5.3.3 (b) (i))
Advice	BOTH FRONT BRAKE DISCS ARE WORN
Advice	Offside Front Brake hose slightly deteriorated (1.1.12 (b) (ii))
Advice	Offside Rear Coil spring corroded (5.3.1 (b) (i))
Fail	Offside Rear Tyre tread depth below requirements of 1.6mm 205/60/16 (5.2.3 (e))
Advice	Nearside Rear Shock absorbers has slight external damage to the casing CORRODED (5.3.2 (b))
Advice	Offside Rear Direction indicator slightly discoloured (4.4.3 (a))
Advice	PLASTIC SILL AND ENGINE COVERS
Fail	Front Brakes imbalanced across an axle (1.2.1 (b) (i))
Advice	Nearside Rear Brake hose has slight corrosion to ferrule (1.1.12 (f) (i))

**Advice** Nearside Front Macpherson strut corroded but not seriously weakened (5.3.3 (b) (i))

**Advice** BODY WORK DAMAGE

**Advice** Nearside Front Lower Suspension arm corroded but not seriously weakened (5.3.3 (b) (i))

**Advice** Offside Rear Brake hose has slight corrosion to ferrule (1.1.12 (f) (i))

**Advice** Nearside Front Coil spring corroded (5.3.1 (b) (i))

**Advice** BOTH FRONT STRUTS ARE SLIGHTLY STIFF

**Advice** Front Anti-roll bar corroded but not seriously weakened (5.3.3 (b) (i))

**Advice** Nearside Rear Brake hose slightly deteriorated (1.1.12 (b) (ii))

**Advice** Offside Front Coil spring corroded (5.3.1 (b) (i))



MOT #9

2018-02-27 14:37

MOT test number

657681165694

Result

✓ Passed

- Advice
- Nearside Front Brake hose has slight corrosion to ferrules (3.6.B.4e)
- Advice
- Nearside Front Anti-roll bar linkage corroded but not seriously weakened (2.4.G.1)
- Advice
- Offside Front Macpherson strut corroded but not seriously weakened (2.4.G.1)
- Advice
- Nearside Rear Brake hose has slight corrosion to ferrules (3.6.B.4e)
- Advice
- Offside Rear Shock absorber has slight corrosion to the casing (2.7.2a)
- Advice
- Front brake disc worn, pitted or scored, but not seriously weakened (3.5.1i)
- Advice
- Offside Rear coil spring corroded (2.4.C.1b)
- Advice
- Nearside Front Lower Suspension arm corroded but not seriously weakened (2.4.G.1)
- Advice
- Front Anti-roll bar corroded but not seriously weakened (2.4.G.1)
- Advice
- Vehicle fitted with side skirts and engine under trays obscuring the view of some components
- Advice
- Offside Front Brake hose has slight corrosion to ferrules (3.6.B.4e)
- Advice
- Nearside Front Macpherson strut corroded but not seriously weakened (2.4.G.1)
- Advice
- Nearside Rear Shock absorber has slight corrosion to the casing (2.7.2a)
- Advice
- Offside Rear Brake hose has slight corrosion to ferrules (3.6.B.4e)
- Advice
- Nearside Rear coil spring corroded (2.4.C.1b)
- Advice
- Rear brake disc worn, pitted or scored, but not seriously weakened (3.5.1i)
- Advice
- Offside Rear Tyre worn close to the legal limit At 2.55mm 205/60/16 (4.1.E.1)
- Advice
- Offside Front Lower Suspension arm corroded but not seriously weakened (2.4.G.1)



MOT #8

2018-02-27 10:56

MOT test number

539379647258

Result

✗ Failed

- Advice

Nearside Front Macpherson strut corroded but not seriously weakened (2.4.G.1)
- Advice

Offside Rear Brake hose has slight corrosion to ferrules (3.6.B.4e)
- Advice

Nearside Rear Shock absorber has slight corrosion to the casing (2.7.2a)
- Advice

Rear brake disc worn, pitted or scored, but not seriously weakened (3.5.1i)
- Fail

Offside Front Front position lamp(s) not working (1.1.A.3b)
- Advice

Nearside Rear coil spring corroded (2.4.C.1b)
- Advice

Offside Front Lower Suspension arm corroded but not seriously weakened (2.4.G.1)
- Fail

Nearside Front Tyre tread depth below requirements of 1.6mm 205/60/16 (4.1.E.1)
- Advice

Nearside Front Brake hose has slight corrosion to ferrules (3.6.B.4e)
- Advice

Nearside Front Anti-roll bar linkage corroded but not seriously weakened (2.4.G.1)
- Advice

Offside Rear Tyre worn close to the legal limit At 2.55mm 205/60/16 (4.1.E.1)
- Advice

Nearside Rear Brake hose has slight corrosion to ferrules (3.6.B.4e)
- Advice

Offside Front Macpherson strut corroded but not seriously weakened (2.4.G.1)
- Advice

Front brake disc worn, pitted or scored, but not seriously weakened (3.5.1i)
- Advice

Offside Rear Shock absorber has slight corrosion to the casing (2.7.2a)
- Advice

Nearside Front Lower Suspension arm corroded but not seriously weakened (2.4.G.1)
- Fail

Offside Headlamp aim too low (1.8)
- Advice

Offside Rear coil spring corroded (2.4.C.1b)
- Advice

Front Anti-roll bar corroded but not seriously weakened (2.4.G.1)
- Fail

Offside Front Tyre tread depth below requirements of 1.6mm 205/60/16 (4.1.E.1)
- Advice

Vehicle fitted with side skirts and engine under trays obscuring the view of some components
- Advice

Offside Front Brake hose has slight corrosion to ferrules (3.6.B.4e)





MOT #7

2017-02-21 15:34

MOT test number

214924388182

Result

✓ Passed

- Advice

Offside Front Brake hose slightly deteriorated (3.6.B.4d)
- Advice

Nearside Rear Shock absorber has slight corrosion to the casing (2.7.2a)
- Advice

Nearside Rear Brake hose has slight corrosion to ferrules (3.6.B.4e)
- Advice

ALL FOUR COIL SPRINGS ARE SLIGHTLY CORRODED
- Advice

Offside Rear Brake hose has slight corrosion to ferrules (3.6.B.4e)
- Advice

BOTH FRONT HEADLAMP AIMS AT THERE LOWEST ACCEPTABLE LEVEL
- Advice

Nearside Rear Brake hose slightly deteriorated (3.6.B.4d)
- Advice

Offside Rear Brake hose slightly deteriorated (3.6.B.4d)
- Advice

Nearside Front Brake hose has slight corrosion to ferrules (3.6.B.4e)
- Advice

ALL FOUR BRAKE DISCS ARE WORN
- Advice

Offside Rear Shock absorber has slight corrosion to the casing (2.7.2a)
- Advice

Offside Front Brake hose has slight corrosion to ferrules (3.6.B.4e)
- Advice

ALL THE BRAKE PIPES ARE PLASTIC COATED
- Advice

Nearside Front Brake hose slightly deteriorated (3.6.B.4d)



MOT #6	2017-02-21 10:39
MOT test number	520510789144
Result	✗ Failed

**Advice** ALL THE BRAKE PIPES ARE PLASTIC COATED

**Advice** Nearside Front Tyre worn close to the legal limit AT 3.62MM 205/60/16 (4.1.E.1)

**Advice** Nearside Rear Brake hose has slight corrosion to ferrules (3.6.B.4e)

**Advice** Offside Rear Shock absorber has slight corrosion to the casing (2.7.2a)

**Advice** BOTH FRONT HEADLAMP AIMS AT THERE LOWEST ACCEPITABLE LEVEL

**Fail** Nearside Front Track rod end ball joint dust cover excessively deteriorated so that it no longer prevents the ingress of dirt (2.2.C.1c)

**Advice** Offside Rear Brake hose has slight corrosion to ferrules (3.6.B.4e)

**Advice** Nearside Front Upper Anti-roll bar ball joint dust cover deteriorated, but preventing the ingress of dirt AND LOWER (2.4.G.2)

**Advice** Nearside Rear Brake hose slightly deteriorated (3.6.B.4d)

**Advice** PLASTIC SILL AND SILL COVERS

**Advice** Nearside Front Lower Suspension arm ball joint dust cover deteriorated, but preventing the ingress of dirt (2.4.G.2)

**Advice** Offside Rear Brake hose slightly deteriorated (3.6.B.4d)

**Advice** ALL FOUR COIL SPRINGS ARE SLIGHTLY CORRODED

**Advice** Nearside Front Brake hose has slight corrosion to ferrules (3.6.B.4e)

**Advice** Nearside Rear Shock absorber has slight corrosion to the casing (2.7.2a)

**Advice** BOTH FRONT STRUTS ARE SLIGHTLY STIFF

**Advice** Offside Front Tyre worn close to the legal limit AT 3.45MM 205/60/16 (4.1.E.1)

**Advice** Offside Front Brake hose has slight corrosion to ferrules (3.6.B.4e)

**Advice** Offside Front Track rod end ball joint dust cover deteriorated, but preventing the ingress of dirt (2.2.C.1c)

**Advice** Nearside Front Brake hose slightly deteriorated (3.6.B.4d)

**Fail** Offside Front Lower Anti-roll bar ball joint dust cover excessively deteriorated so that it no longer prevents the ingress of dirt (2.4.G.2)

**Advice** Offside Front Brake hose slightly deteriorated (3.6.B.4d)

**Advice** ALL FOUR BRAKE DISCS ARE WORN

**Fail** Offside Front Lower Suspension arm ball joint dust cover excessively deteriorated so that it no longer prevents the ingress of dirt (2.4.G.2)



MOT #5	2016-03-18 10:44
MOT test number	534842120571
Result	✓ Passed

- Advice** Offside Front Brake hose has slight corrosion to ferrules (3.6.B.4e)
- Advice** Nearside Rear Shock absorber has slight corrosion to the casing (2.7.2a)
- Advice** Offside Front Lower Suspension arm has slight play in a ball joint (2.4.G.2)
- Advice** Nearside Front Brake hose slightly deteriorated (3.6.B.4d)
- Advice** Offside Front Upper Anti-roll bar ball joint dust cover deteriorated, but preventing the ingress of dirt AND LOWER (2.4.G.2)
- Advice** APPLIECFINGER AND THUMB PRESSURE ON SILLS AND FLOOR AREA
- Advice** Offside Front Brake hose slightly deteriorated (3.6.B.4d)
- Advice** BOTH FRONT STRUTS ARE SLIGHTLY STIFF
- Advice** Nearside Front Macpherson strut corroded but not seriously weakened (2.4.G.1)
- Advice** Nearside Front Lower Suspension arm ball joint dust cover deteriorated, but preventing the ingress of dirt (2.4.G.2)
- Advice** ALL FOUR COIL SPRINGS ARE SLIGHTLY CORRODED
- Advice** Nearside Rear Brake hose has slight corrosion to ferrules (3.6.B.4e)
- Advice** Offside Front Macpherson strut corroded but not seriously weakened (2.4.G.1)
- Advice** Offside Front Lower Suspension arm ball joint dust cover deteriorated, but preventing the ingress of dirt (2.4.G.2)
- Advice** Offside Rear Brake hose has slight corrosion to ferrules (3.6.B.4e)
- Advice** Nearside Front Upper Anti-roll bar ball joint dust cover deteriorated, but preventing the ingress of dirt AND LOWER (2.4.G.2)
- Advice** Nearside Rear Brake hose slightly deteriorated (3.6.B.4d)
- Advice** Nearside Front Upper Macpherson strut has slight movement at the upper attachment (2.5.A.1c)
- Advice** BOTH FRONT WIPER BLADES ARE SLIGHTLY SMEARING THE SCREEN
- Advice** Offside Rear Brake hose slightly deteriorated (3.6.B.4d)
- Advice** BOTH FRONT WIPER BLADES ARE SLIGHTLY SMEARING THE SCREEN
- Advice** Nearside Front Brake hose has slight corrosion to ferrules (3.6.B.4e)
- Advice** Offside Front Upper Macpherson strut has slight movement at the upper attachment (2.5.A.1c)
- Advice** Nearside Front Lower Suspension arm has slight play in a ball joint (2.4.G.2)
- Advice** Offside Rear Shock absorber has slight corrosion to the casing (2.7.2a)



MOT #4

2015-04-16 12:51

MOT test number

975186605197

Result		✓ Passed
Notice	BOTH FRONT STRUTS ARE SLIGHTLY STIFF	
Advice	Offside Front Lower Suspension arm has slight play in a ball joint (2.4.G.2)	
Notice	NEARSIDE AND OFFSIDE OUTER SILLS HAVE PLASTIC COVERS ON THE SILLS.,SILLS NOT CHECKED	
Advice	Offside Front Upper Macpherson strut has slight movement at the upper attachment (2.5.A.1c)	
Advice	Offside Front Track rod end ball joint has slight play (2.2.B.1f)	
Notice	BODY WORK DAMAGE	
Advice	Nearside Front Lower Suspension arm has slight play in a ball joint (2.4.G.2)	
Notice	Engine covers fitted obscuring some components in the engine bay	
Advice	Nearside Front Upper Macpherson strut has slight movement at the upper attachment (2.5.A.1c)	
Notice	ALL FOUR BRAKE DISCS ARE WORN	
Advice	Nearside Front Track rod end ball joint has slight play (2.2.B.1f)	



MOT #3

2015-04-16 12:51

MOT test number

406196805144

Result		✗ Failed
Advice	Nearside Front Lower Suspension arm has slight play in a ball joint (2.4.G.2)	
Notice	BOTH FRONT STRUTS ARE SLIGHTLY STIFF	
Advice	Nearside Front Upper Macpherson strut has slight movement at the upper attachment (2.5.A.1c)	
Notice	NEAR SIDE AND OFFSIDE OUTER SILLS HAVE PLASTIC COVERS ON THE SILLS.,,SILLS NOT CHECKED	
Advice	Nearside Front Track rod end ball joint has slight play (2.2.B.1f)	
Pass with rectification	Offside Front Headlamp aim too low (1.8)	
Notice	BODY WORK DAMAGE	
Advice	Offside Front Lower Suspension arm has slight play in a ball joint (2.4.G.2)	
Notice	Engine covers fitted obscuring some components in the engine bay	
Advice	Offside Front Upper Macpherson strut has slight movement at the upper attachment (2.5.A.1c)	
Notice	ALL FOUR BRAKE DISCS ARE WORN	
Advice	Offside Front Track rod end ball joint has slight play (2.2.B.1f)	



MOT #2

2014-04-18 15:49

MOT test number

295478804456

Result

✓ Passed

- Notice

BOTH FRONT STRUTS ARE SLIGHTLY STIFF
- Notice

Child seat fitted not allowing full inspection of adult belt
- Notice

NEARSIDE AND OFFSIDE OUTER SILLS HAVE PLASTIC COVERS ON THE SILLS..SILLS NOT CHECKED
- Advice

Nearside Rear Brake hose has slight corrosion to ferrules (3.6.B.4e)
- Notice

FRONT BRAKE PADS ARE WEARING THIN
- Advice

Offside Rear Brake hose has slight corrosion to ferrules (3.6.B.4e)
- Notice

EXHAUST SYSTEM IS CORRODED
- Notice

ALL THE BRAKE PIPES ARE PLASTIC COATED
- Notice

Engine covers fitted obscuring some components in the engine bay
- Advice

Nearside Front Brake hose has slight corrosion to ferrules (3.6.B.4e)
- Notice

HEADLAMPS WHERE SET AT ZERO..ON THE DASH
- Advice

Offside Front Brake hose has slight corrosion to ferrules (3.6.B.4e)
- Notice

ALLFOUR BRAKE DISCS ARE WORN





MOT #1

2014-04-18 09:12

MOT test number

877858804126

Result

✗ Failed

- Advice

Offside Rear Brake hose has slight corrosion to ferrules (3.6.B.4e)
- Notice

ALLFOUR BRAKE DISCS ARE WORN
- Fail

Offside Front Headlamp aim too low (1.8)
- Notice

BOTH FRONT STRUTS ARE SLIGHTLY STIFF
- Fail

Offside Front Tyre tread depth below requirements of 1.6mm (4.1.E.1)
- Notice

Child seat fitted not allowing full inspection of adult belt
- Advice

Nearside Front Brake hose has slight corrosion to ferrules (3.6.B.4e)
- Notice

NEARSIDE AND OFFSIDE OUTER SILLS HAVE PLASTIC COVERS ON THE SILLS..SILLS NOT CHECKED
- Advice

Offside Front Brake hose has slight corrosion to ferrules (3.6.B.4e)
- Notice

FRONT BRAKE PADS ARE WEARING THIN
- Notice

EXHAUST SYSTEM IS CORRODED
- Fail

Nearside Front Tyre tread depth below requirements of 1.6mm (4.1.E.1)
- Notice

ALL THE BRAKE PIPES ARE PLASTIC COATED
- Fail

Parking brake lever has no reserve travel (3.1.6b)
- Notice

Engine covers fitted obscuring some components in the engine bay
- Advice

Nearside Rear Brake hose has slight corrosion to ferrules (3.6.B.4e)
- Notice

HEADLAMPS WHERE SET AT ZERO..ON THE DASH



Tax & MOT check

✓  
**Taxed**  
**Tax due:**  
1 April 2025

✓  
**MOT**  
**Expires:**  
27 March 2025

<b>Tax status</b>	Valid until 1 April
<b>Days left</b>	336
<b>MOT expiry date</b>	27 March 2025
<b>Full MOT history</b>	<a href="#">See MOT history</a>

Tax calculation

<b>Vehicle class</b>	48
<b>Band</b>	G
<b>Single payment (12 months)</b>	£ 240,00,-
<b>Single six month payment</b>	£ 132,00,-
<b>Total payable by 12 monthly instalments</b>	£ 252,00,-



Damage history

Check the damage history for this TOYOTA. See if, where and when this TOYOTA had damage and the car repair costs. We also check if this TOYOTA was scrapped. Download the premium report [here](#) for the results.

Damage 1

Date	
Category	
Type	



Damage 2

Date	
Category	
Type	



Extra TOYOTA salvage check



If this vehicle was seen at a salvage auction we offer: vehicle pictures, salvage location, retail value. Download the premium report [here](#) for more information.

More info >



Vehicle valuation

What is this car worth? See the vehicle value of this TOYOTA in the premium report. We check: purchase value, age, mileage, MOT history, damages and online sale prices.

Trade retail value	£ 19,999
Auction value	£ 19,999
Average private trade value	£ 19,999

More info >



Owner history

For how long did the current and previous owner(s) have this TOYOTA? How many owners did this TOYOTA have? Check it in the premium report and see all owner registrations. Download the full report [here](#).

*****	*****
*****	*****
*****	*****
*****	*****
*****	*****
*****	*****
*****	*****

More info >

Plate changes

See in this check if this TOYOTA had different number plates.

Number of plates	1
Current registration	*****
Plate since	2019-06-29
Current registration	*****
Plate since	2019-06-29

More info >



Finance check

Check if this TOYOTA is financed, has an outstanding loan or finance agreement. If you are purchasing a vehicle it is smart to ensure that any finance that may have been taken out on this TOYOTA has been settled. If not, and you buy this TOYOTA then you could lose the money and the car you paid for. Download the premium report [here](#) and check if this TOYOTA is financed.

Finance company	XXXXXXXX	XXXX
Date of agreement	XXXXXXXX	XXXX
Agreement type	XXXXXXXX	XXXX
Agreement term	XXXXXXXX	XXXX
Agreement number	XXXXXXXX	XXXX
Contact info	XXXXXXXX	XXXX

More info >



Mileage check

Odometer	In miles
Mileage registrations	19
First mileage registration	2011-04-27
Last registration	2024-03-28
Complete history	<a href="#">See info</a>



Registration #1	2011-04-27	25 mi
Registration #2	2014-04-18	31.470 mi
Registration #3	2014-04-18	31.470 mi
Registration #4	2015-04-16	43.600 mi
Registration #5	2016-03-18	55.367 mi
Registration #6	2017-02-21	68.034 mi
Registration #7	2017-02-21	68.034 mi
Registration #8	2018-02-27	82.644 mi
Registration #9	2018-02-27	82.345 mi
Registration #10	2019-03-08	96.258 mi
Registration #11	2020-03-29	96.258 mi
Registration #12	2020-03-29	96.258 mi
Registration #13	2020-03-29	96.258 mi
Registration #14	2020-03-29	96.258 mi
Registration #15	2020-03-29	96.258 mi
Registration #16	2020-03-29	96.258 mi
Registration #17	2020-03-29	96.258 mi
Registration #18	2020-03-29	96.258 mi
Registration #19	2020-03-29	96.258 mi

More info >



Car features

The TOYOTA factory car options list is only available in the premium report.

S0225	Air conditioning
S0295	
S0482	
S0501	
S0566	
S0567	
S0569	

View the complete TOYOTA factory list for this vehicle [here](#).

More info >

Safety ratings

NCAP rating	★★★★★
Adult	89%
Children	75%
Pedestrian	69%
Safety systems	86%
Overall rating	82%
Video	<a href="#">see crash video</a>



Dimensions & weight

Width	1790 mm
Height	1620 mm
Length	4440 mm
Wheel base	2780 mm
Kerb weight	1505 kg
Max. allowed weight	2125 kg

Additional information

Fuel tank capacity	55 l
Fuel delivery	Multi-Point Injection
Number of doors	5
Number of seats	7



**Engine number**

1ZRU357135