



HONDA



RF57BOV

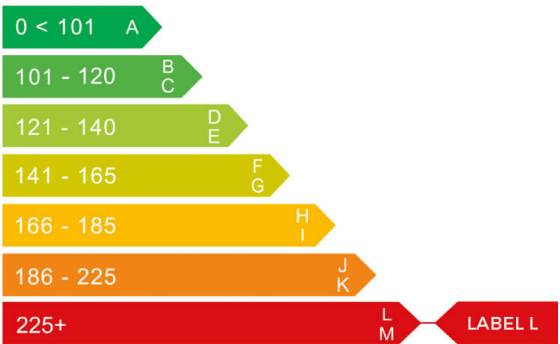
report date: 2024-03-28

General information

Make	HONDA
Model	ACCORD VTEC EX +
Colour	Silver
Year of manufacture	2007
Top speed	132 mph
Gearbox	6 speed automatic

Engine & fuel consumption

Power	190 BHP
Max. torque	223 Nm at 4.500 rpm
Engine capacity	2.354 cc
Cylinders	4
Fuel type	Petrol
Consumption city	20.2 mpg
Consumption extra urban	38.7 mpg
Consumption combined	29.1 mpg
CO2 emission	229 g/km
CO2 label	L

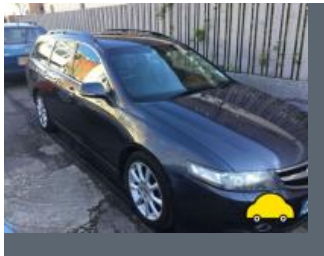




Internet history

Entry 2

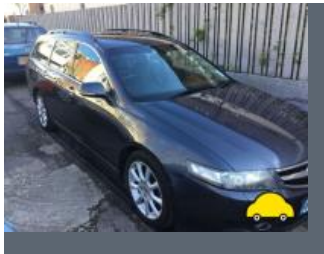
Date	2021-08-02
Pictures	7
Listing price	View report



source: [autotrader.co.uk](#)

Entry 1

Date	2021-06-10
Pictures	7
Listing price	View report



source: [autotrader.co.uk](#)



MOT history

MOT expiry date	2022-09-01
MOT pass rate	86 %
MOT passed	12
Failed MOT tests	2
Total advice items	75
Total items failed	6

MOT #14 2021-08-05 13:56

MOT test number 941852380163

Result ✓ Passed

Next expiry date 2022-09-01

- Minor** Headlamp lens slightly defective Both NSF OSF (4.1.1 (b) (i))
- Minor** Suspension arm ball joint dust cover severely deteriorated Both NSF OSF (5.3.4 (b) (i))
- Advice** Rear Exhaust has a minor leak of exhaust gases (6.1.2 (a))

MOT #13 2021-08-02 08:10

MOT test number 700617618684

Result ✗ Failed

- Advice** Brake disc worn, pitted or scored, but not seriously weakened Both OSR NSR (1.1.14 (a) (ii))
- Minor** Headlamp lens slightly defective Both NSF OSF (4.1.1 (b) (i))
- Fail** Battery insecure and likely to fall from carrier (4.13 (a) (ii))
- Advice** Rear Exhaust has a minor leak of exhaust gases (6.1.2 (a))
- Minor** Suspension arm ball joint dust cover severely deteriorated Both NSF OSF (5.3.4 (b) (i))
- Fail** Brake pad(s) worn down to wear indicator Both OSR NSR (1.1.13 (a) (i))

**MOT #12**

2020-08-21 15:20

MOT test number

666661960170

Result

✓ Passed

- Minor** Headlamp lens slightly defective both (4.1.1 (b) (i))
- Advice** Front Suspension arm pin or bush worn but not resulting in excessive movement both (5.3.4 (a) (i))
- Advice** Exhaust corroded
- Advice** Rear Exhaust has a minor leak of exhaust gases (6.1.2 (a))
- Advice** Rear Brake disc worn, pitted or scored, but not seriously weakened (1.1.14 (a) (ii))
- Advice** Rear Anti-roll bar pin or bush worn but not resulting in excessive movement both (5.3.4 (a) (i))
- Minor** Front Suspension arm ball joint dust cover severely deteriorated both (5.3.4 (b) (i))
- Advice** Rear Brake hose has slight corrosion to ferrule all (1.1.12 (f) (i))
- Advice** Rear tyres distorted
- Advice** Front Registration plate deteriorated but not likely to be misread (0.1 (b))
- Advice** Front Brake disc worn, pitted or scored, but not seriously weakened (1.1.14 (a) (ii))
- Advice** Front Anti-roll bar pin or bush worn but not resulting in excessive movement both (5.3.4 (a) (i))

**MOT #11**

2019-08-13 08:48

MOT test number

629405996327

Result

✓ Passed

- Advice** Registration plate deteriorated but not likely to be misread both (0.1 (b))
- Advice** Rear Anti-roll bar pin or bush worn but not resulting in excessive movement (5.3.4 (a) (i))
- Advice** Front Suspension arm pin or bush worn but not resulting in excessive movement both (5.3.4 (a) (i))
- Advice** Rear Brake disc worn, pitted or scored, but not seriously weakened (1.1.14 (a) (ii))
- Advice** Rear Exhaust has a minor leak of exhaust gases (6.1.2 (a))
- Minor** Headlamp lens slightly defective both (4.1.1 (b) (i))
- Advice** Front Anti-roll bar pin or bush worn but not resulting in excessive movement (5.3.4 (a) (i))
- Advice** Exhaust system corroded
- Advice** Offside Rear Shock absorbers light misting of oil or has limited damping effect (5.3.2 (b))
- Minor** Offside Rear Position lamp with a multiple light source up to 1/2 not functioning (4.2.1 (a) (i))

MOT #10

2018-08-24 13:55

MOT test number

407333577416

Result

✓ Passed

- Advice** Registration plate deteriorated but not likely to be misread both (0.1 (b))
- Advice** Offside Rear Shock absorbers light misting of oil or has limited damping effect (5.3.2 (b))
- Minor** Headlamp lens slightly defective both (4.1.1 (b) (i))
- Advice** Rear Anti-roll bar pin or bush worn but not resulting in excessive movement (5.3.4 (a) (i))
- Advice** Front Suspension arm pin or bush worn but not resulting in excessive movement both (5.3.4 (a) (i))

**MOT #9**

2018-08-21 10:59

MOT test number

954319779118

Result**✗ Failed****Advice** Tyre size 225/45x17**Fail** Nearside Rear Tyre has a cut in excess of the requirements deep enough to reach the ply or cords (5.2.3 (d) (i))**Fail** Nearside Front Anti-roll bar linkage ball joint excessively worn (5.3.4 (a) (i))**Advice** Nearside Front Tyre worn close to legal limit/worn on edge (5.2.3 (e))**Advice** Rear Anti-roll bar pin or bush worn but not resulting in excessive movement (5.3.4 (a) (i))**Minor** Headlamp lens slightly defective both (4.1.1 (b) (i))**Advice** Front Suspension arm pin or bush worn but not resulting in excessive movement both (5.3.4 (a) (i))**Advice** Offside Rear Tyre has a cut but not deep enough to reach the ply or cords (5.2.3 (d) (i))**Advice** Registration plate deteriorated but not likely to be misread both (0.1 (b))**Fail** Offside Front Tyre has a cut in excess of the requirements deep enough to reach the ply or cords (5.2.3 (d) (i))**Fail** Offside Front Anti-roll bar linkage ball joint excessively worn (5.3.4 (a) (i))**Advice** Offside Front Tyre worn close to legal limit/worn on edge (5.2.3 (e))**Advice** Offside Rear Shock absorbers light misting of oil or has limited damping effect (5.3.2 (b))**Advice** Nearside Front Tyre has a cut but not deep enough to reach the ply or cords (5.2.3 (d) (i))

**MOT #8**

2017-08-14 12:53

MOT test number

557879674240

Result

✓ Passed

- Advice** Nearside Front Headlamp deteriorated but light output not reduced (1.7.5a)
- Advice** Nearside Front Anti-roll bar linkage rubber bush deteriorated but not resulting in excessive movement play in D bush (2.4.G.2)
- Advice** Nearside Front Windscreen has damage to an area less than a 40mm circle outside zone 'A' (8.3.1d)
- Advice** Rear registration plate deteriorated but not likely to be misread (6.3.1d)
- Advice** Offside Front Suspension arm rubber bush deteriorated but not resulting in excessive movement perished/splitting (2.4.G.2)
- Advice** Offside Front fog lamp damage
- Advice** Offside Front Anti-roll bar has slight play in a pin/bush (2.4.G.2)
- Advice** Offside Front Headlamp deteriorated but light output not reduced (1.7.5a)
- Advice** Offside Front Anti-roll bar linkage rubber mounting deteriorated but not resulting in excessive movement play in D bush (2.4.G.2)
- Advice** Front registration plate deteriorated but not likely to be misread (6.3.1d)
- Advice** Nearside Front Suspension arm rubber bush deteriorated but not resulting in excessive movement perished/splitting (2.4.G.2)
- Advice** Nearside Front fog lamps damage
- Advice** Nearside Front Anti-roll bar has slight play in a pin/bush (2.4.G.2)

**MOT #7**

2016-08-23 09:38

MOT test number

448438819296

Result

✓ Passed

- Advice** Rear registration plate deteriorated but not likely to be misread (6.3.1d)
- Advice** Front brake disc worn, pitted or scored, but not seriously weakened (3.5.1i)
- Advice** Front Lower Shock absorber has a slightly worn bush both (2.7.4)
- Advice** Windscreen has damage to an area less than a 40mm circle outside zone 'A' (8.3.1d)
- Advice** Front registration plate deteriorated but not likely to be misread (6.3.1d)
- Advice** Headlamp deteriorated but light output not reduced both (1.7.5a)
- Advice** Front Lower Suspension arm rubber bush deteriorated but not resulting in excessive movement both (2.4.G.2)
- Advice** Nearside Play in steering rack inner joint(s)

MOT #6

2015-09-02 08:42

MOT test number

561421143623

Result

✓ Passed

- Advice** Kids seat fitted
- Advice** Front Suspension arm rubber bush deteriorated but not resulting in excessive movement both (2.4.G.2)
- Advice** Front registration plate deteriorated but not likely to be misread (6.3.1d)
- Advice** Front brake disc worn, pitted or scored, but not seriously weakened (3.5.1i)

MOT #5

2014-09-29 09:23

MOT test number

156642874238

Result

✓ Passed

- Advice** Front Anti-roll bar linkage has slight play in a ball joint (2.4.G.2)

**MOT #4** 2013-09-27 11:58**MOT test number** 109990973207**Result** ✓ Passed**MOT #3** 2012-10-02 09:46**MOT test number** 647746672236**Result** ✓ Passed**Advice** Front Brake pad(s) wearing thin (3.5.1g)**Notice** Child seat fitted not allowing full inspection of adult belt**Advice** Front Suspension arm rubber bush deteriorated but not resulting in excessive movement (2.4.G.2)**MOT #2** 2011-09-14 11:40**MOT test number** 226717751217**Result** ✓ Passed**Notice** Child seat fitted not allowing full inspection of adult belt**MOT #1** 2010-09-13 08:47**MOT test number** 340166850238**Result** ✓ Passed**Advice** Offside Front Tyre worn close to the legal limit (4.1.E.1)



Tax & MOT check

✖
Untaxed

Tax expired:
18 March 2021

✖
MOT

Expired:
1 September 2022

Tax status	Expired at 18 March 2021
Days left	1138 days too late
MOT expiry date	1 September 2022
Full MOT history	See MOT history

Tax calculation

Vehicle class	48
Band	L
Single payment (12 months)	£ 675,00,-
Single six month payment	£ 371,25,-
Total payable by 12 monthly instalments	£ 708,75,-



Damage history

Check the damage history for this HONDA. See if, where and when this HONDA had damage and the car repair costs. We also check if this HONDA was scrapped. Download the premium report [here](#) for the results.

Damage 1		
Date		
Category		
Type		
Damage 2		
Date		
Category		
Type		



Extra HONDA salvage check



If this vehicle was seen at a salvage auction we offer: vehicle pictures, salvage location, retail value. Download the premium report [here](#) for more information.

More info >



Vehicle valuation

What is this car worth? See the vehicle value of this HONDA in the premium report. We check: purchase value, age, mileage, MOT history, damages and online sale prices.

Trade retail value	£ 19,999
Auction value	£ 19,999
Average private trade value	£ 19,999

More info >



Owner history

For how long did the current and previous owner(s) have this HONDA? How many owners did this HONDA have? Check it in the premium report and see all owner registrations. Download the full report [here](#).

Owner	Start date
Owner	Start date
Owner	Start date
Owner	Start date
Owner	Start date
Owner	Start date
Owner	Start date

More info >

Plate changes

See in this check if this HONDA had different number plates.

Number of plates	1
Current registration	 
Plate since	2024-03-28
Current registration	 
Plate since	2024-03-28

More info >



Finance check

Check if this HONDA is financed, has an outstanding loan or finance agreement. If you are purchasing a vehicle it is smart to ensure that any finance that may have been taken out on this HONDA has been settled.

If not, and you buy this HONDA then you could lose the money and the car you paid for.

Download the premium report [here](#) and check if this HONDA is financed.

Finance company	XXXXXXXX	XXXX
Date of agreement	XXXXXXXX	XXXX
Agreement type	XXXXXXXX	XXXX
Agreement term	XXXXXXXX	XXXX
Agreement number	XXXXXXXX	XXXX
Contact info	XXXXXXXX	XXXX

More info >



Mileage check

Odometer	In miles
Mileage registrations	17
First mileage registration	2007-10-11
Last registration	2021-08-05
Complete history	See info



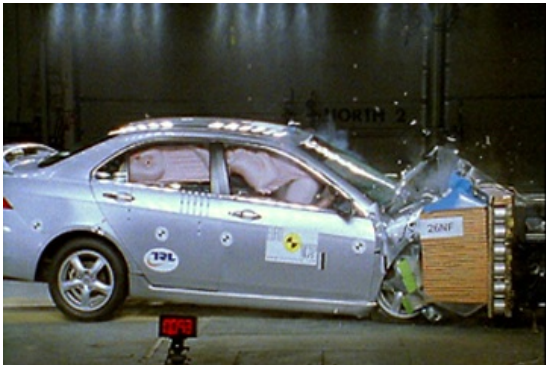
Registration #1	2007-10-11	29 mi
Registration #2	2010-09-13	37.871 mi
Registration #3	2011-09-14	60.473 mi
Registration #4	2012-10-02	82.860 mi
Registration #5	2013-09-27	99.101 mi
Registration #6	2014-09-29	113.334 mi
Registration #7	2015-09-02	131.759 mi
Registration #8	2016-08-23	149.264 mi
Registration #9	2017-08-14	166.711 mi
Registration #10	2018-08-14	184.158 mi
Registration #11	2019-08-14	201.605 mi
Registration #12	2020-08-14	219.052 mi
Registration #13	2021-08-05	236.499 mi
Registration #14	2022-08-05	253.946 mi
Registration #15	2023-08-05	271.393 mi
Registration #16	2024-03-28	288.840 mi
Registration #17	2024-03-28	306.287 mi

More info >



Safety ratings

NCAP rating	★★★★☆
Video	see crash video



Dimensions & weight

Width	1760 mm
Height	1495 mm
Length	4750 mm
Wheel base	2720 mm
Kerb weight	1619 kg

Additional information

Fuel tank capacity	65 l
Fuel delivery	Multi-Point Injection
Number of doors	5
Number of seats	5
Number of axles	2
Engine number	K24A36500044