



PEUGEOT



report date: 2024-03-28

General information

Make	PEUGEOT
Model	206 LX
Colour	Blue
Year of manufacture	2003
Top speed	106 mph
0 - 60 mph	13.2 seconds
Gearbox	5 speed Manual

Engine & fuel consumption

Power	75 BHP
Max. torque	111 Nm at 2.600 rpm
Engine capacity	1.360 cc
Cylinders	4
Fuel type	Petrol
Consumption city	31.7 mpg
Consumption extra urban	53.3 mpg
Consumption combined	42.8 mpg
CO2 emission	149 g/km
CO2 label	F

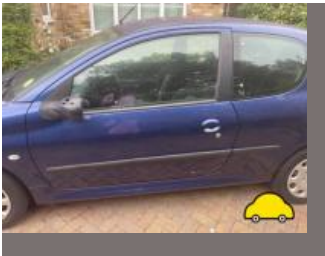
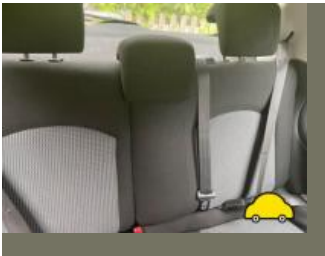




Internet history

Entry 1

Date	2021-08-31
Pictures	13
Listing price	View report



source: [autotrader.co.uk](https://www.autotrader.co.uk)



MOT history

MOT expiry date	2024-03-21
MOT pass rate	58 %
MOT passed	18
Failed MOT tests	13
Total advice items	197
Total items failed	29

MOT #31	2023-03-18 16:24
MOT test number	304349521948
Result	✓ Passed
Next expiry date	2024-03-21

MOT #30	2022-03-16 13:16
MOT test number	471207377745
Result	✓ Passed
Minor	Offside Front Steering box leaking oil (2.1.1 (e) (i))
Advice	Front Coil spring corroded both sides (5.3.1 (b) (i))
Advice	Rear Fuel Pipe/s corroded
Advice	Central Rear Sub-frame corroded but not seriously weakened (5.3.3 (b) (i))
Advice	Central Front Oil leak, but not excessive (8.4.1 (a) (i))
Advice	Central Front Exhaust has a minor leak of exhaust gases (6.1.2 (a))

**MOT #29**

2022-03-16 13:16

MOT test number

375884522781

Result**✗ Failed**

- Advice** Central Front Exhaust has a minor leak of exhaust gases (6.1.2 (a))
- Pass with rectification** Offside Rear Stop lamp(s) not working (4.3.1 (a) (ii))
- Pass with rectification** Offside Front Headlamp aim too low (4.1.2 (a))
- Advice** Front Coil spring corroded both sides (5.3.1 (b) (i))
- Advice** Central Rear Sub-frame corroded but not seriously weakened (5.3.3 (b) (i))
- Minor** Offside Front Steering box leaking oil (2.1.1 (e) (i))
- Pass with rectification** Nearside Front Headlamp aim too low (4.1.2 (a))
- Advice** Rear Fuel Pipe/s corroded
- Advice** Central Front Oil leak, but not excessive (8.4.1 (a) (i))

MOT #28

2021-03-22 17:13

MOT test number

913252405900

Result**✓ Passed**

- Advice** Steering box has seepage (2.1.1 (e) (i))
- Advice** Rear Sub-frame corroded but not seriously weakened (5.3.3 (b) (i))
- Advice** Rear Exhaust has a minor leak of exhaust gases back box (6.1.2 (a))
- Advice** Nearside Front Coil spring corroded (5.3.1 (b) (i))
- Advice** Nearside Front Tyre worn close to legal limit/worn on edge (5.2.3 (e))
- Advice** Brake pipe corroded, covered in grease or other material (1.1.11 (c))



MOT #27

2020-06-09 11:35

MOT test number

177421737407

Result		✓ Passed
Advice	Some steering and suspension bushes are starting to deteriorate	
Advice	Front Brake disc worn, pitted or scored, but not seriously weakened both sides (1.1.14 (a) (ii))	
Advice	Rear Registration plate deteriorated but not likely to be misread (0.1 (b))	
Advice	Offside Rear Child Seat fitted not allowing full inspection of adult belt	
Advice	Offside Rear Tyre slightly damaged/cracking or perishing (5.2.3 (d) (ii))	
Advice	Exhaust is starting to corrode surface rust	
Advice	Offside Front Tyre worn close to legal limit/worn on edge (5.2.3 (e))	
Advice	Nearside Front Child Seat fitted not allowing full inspection of adult belt	
Advice	Nearside Rear Tyre slightly damaged/cracking or perishing (5.2.3 (d) (ii))	
Advice	Body panels have some damage to them	
Advice	Nearside Front Tyre worn close to legal limit/worn on edge (5.2.3 (e))	



MOT #26

2020-06-09 09:37

MOT test number

831316655099

Result

✗ Failed

- Advice** Nearside Rear Tyre slightly damaged/cracking or perishing (5.2.3 (d) (ii))
- Advice** Nearside Front Tyre worn close to legal limit/worn on edge (5.2.3 (e))
- Advice** Offside Rear Child Seat fitted not allowing full inspection of adult belt
- Advice** Body panels have some damage to them
- Advice** Front Brake disc worn, pitted or scored, but not seriously weakened both sides (1.1.14 (a) (ii))
- Advice** Some steering and suspension bushes are starting to deteriorate
- Advice** Oil leak, but not excessive (8.4.1 (a) (i))
- MAJOR** Offside Rear Stop lamp(s) not working (4.3.1 (a) (ii))
- Advice** Offside Rear Tyre slightly damaged/cracking or perishing (5.2.3 (d) (ii))
- Advice** Rear Registration plate deteriorated but not likely to be misread (0.1 (b))
- Advice** Nearside Front Child Seat fitted not allowing full inspection of adult belt
- Advice** Offside Front Tyre worn close to legal limit/worn on edge (5.2.3 (e))
- Advice** Exhaust is starting to corrode surface rust
- Advice** Brake pipe corroded, covered in grease or other material all (1.1.11 (c))
- MAJOR** Offside Rear Wheel bearing rough when rotated (5.1.3 (b) (i))

**MOT #25**

2019-03-27 13:30

MOT test number

180657744392

Result

✓ Passed

- Advice** Rear Registration plate deteriorated but not likely to be misread (0.1 (b))
- Advice** Some steering and suspension bushes are starting to deteriorate
- Advice** Rear Child Seat fitted not allowing full inspection of adult belt both sides
- Advice** Side repeater slightly discoloured o/s lens cover missing (4.4.3 (a))
- Advice** Exhaust is starting to corrode and deteriorate
- Advice** All brake pipes are starting to corrode surface rust need cleaning
- Advice** Body panels have some damage to them

MOT #24

2019-03-27 08:00

MOT test number

282734992053

Result

✗ Failed

- MAJOR** Offside Rear Rear fog lamp switch inoperative (4.5.3 (a) (ii))
- Advice** Exhaust is starting to corrode and deteriorate
- Advice** Side repeater slightly discoloured o/s lens cover missing (4.4.3 (a))
- Advice** All brake pipes are starting to corrode surface rust need cleaning
- Advice** Rear Child Seat fitted not allowing full inspection of adult belt both sides
- Advice** Body panels have some damage to them
- MAJOR** Offside Front Side repeater not working (4.4.1 (a) (ii))
- Advice** Some steering and suspension bushes are starting to deteriorate
- Advice** Rear Registration plate deteriorated but not likely to be misread (0.1 (b))



MOT #23

2018-04-04 14:57

MOT test number

539521674051

Result		✓ Passed
Advice	O/s side repeater lamp lens is missing	
Advice	Both rear tyre threads are starting to crack and deteriorate	
Advice	Exhaust is corroding and deteriorating	
Advice	Windscreen has damage to an area less than a 10mm circle within zone 'A' (8.3.1a)	
Advice	Body panels are damaged	
Advice	O/s outer sill is damaged	
Advice	Oil leak	
Advice	Nearside Front Lower Suspension arm rubber mounting deteriorated but not resulting in excessive movement (2.4.G.2)	
Advice	Some steering and suspension bushes are starting to deteriorate	
Advice	Rear Child Seat fitted not allowing full inspection of adult belt both sides	



MOT #22	2018-04-04 11:31
MOT test number	990888801795
Result	✗ Failed
Advice	Some steering and suspension bushes are starting to deteriorate
Fail	Front Brakes imbalanced across an axle (3.7.B.5b)
Advice	O/s side repeater lamp lens is missing
Advice	Windscreen has damage to an area less than a 10mm circle within zone 'A' (8.3.1a)
Advice	Both rear tyre threads are starting to crack and deteriorate
Fail	Offside Front Lower Suspension arm rubber mounting deteriorated resulting in excessive movement (2.4.G.2)
Advice	Exhaust is corroding and deteriorating
Advice	Body panels are damaged
Advice	Nearside Front Lower Suspension arm rubber mounting deteriorated but not resulting in excessive movement (2.4.G.2)
Advice	O/s outer sill is damaged
Advice	Rear Child Seat fitted not allowing full inspection of adult belt both sides
Advice	Oil leak

MOT #21	2017-04-25 13:04
MOT test number	780323588062
Result	✓ Passed
Advice	Exhaust is starting to corrode and deteriorate
Advice	Both front tyre are starting to wear on edges
Advice	Body panels are damaged
Advice	Rear Child Seat fitted not allowing full inspection of adult belt both sides
Advice	Some steering and suspension bushes are starting to deteriorate
Advice	Both outer sills ahve some damage to them

**MOT #20**

2017-04-25 11:37

MOT test number

506798511121

Result**✗ Failed**

- Advice** Exhaust is starting to corrode and deteriorate
- Fail** Front Windscreen wiper does not clear the windscreen effectively both blades (8.2.2)
- Advice** Both front tyre are starting to wear on edges
- Fail** Front Exhaust has a major leak of exhaust gases section (7.1.2)
- Advice** Body panels are damaged
- Advice** Some steering and suspension bushes are starting to deteriorate
- Fail** Power steering pipe(s) or hose(s) leaking from a seal from pump (2.3.3b)
- Advice** Rear Child Seat fitted not allowing full inspection of adult belt both sides
- Advice** Both outer sills have some damage to them

MOT #19

2016-04-20 11:18

MOT test number

666687342493

Result**✓ Passed**

- Advice** Child seat is fitted unable to full check belt
- Advice** Oil leak
- Advice** Front brake disc worn, pitted or scored, but not seriously weakened both sides (3.5.1i)
- Advice** Rear wiper blade is worn
- Advice** Some steering and suspension bushes are starting to deteriorate
- Advice** Rear registration plate deteriorated but not likely to be misread (6.3.1d)
- Advice** N/s body panel is damaged
- Advice** Nearside Front Brake pipe slightly corroded to rear pipe (3.6.B.2c)

**MOT #18**

2016-04-20 11:18

MOT test number

248096103085

Result**✗ Failed**

- Advice** Nearside Front Brake pipe slightly corroded to rear pipe (3.6.B.2c)
- Advice** Child seat is fitted unable to full check belt
- Advice** Oil leak
- Pass with rectification** Offside Headlamp not working on dipped beam (1.7.5a)
- Advice** Front brake disc worn, pitted or scored, but not seriously weakened both sides (3.5.1i)
- Advice** Rear wiper blade is worn
- Advice** Some steering and suspension bushes are starting to deteriorate
- Pass with rectification** Offside Front position lamp(s) not working (1.1.A.3b)
- Advice** N/s body panel is damaged
- Advice** Rear registration plate deteriorated but not likely to be misread (6.3.1d)

MOT #17

2015-05-20 12:25

MOT test number

376760345100

Result**✓ Passed**

- Notice** O/sn/s front tyres starting to wear on edges
- Advice** Rear registration plate deteriorated but not likely to be misread (6.3.1d)
- Notice** Child seat fitted not allowing full inspection of adult belt
- Notice** Some steering and suspension bushes starting to deteriorate
- Notice** O/sn/s rear tyre side walls to tread cracking/deteriorating.
- Notice** Oil leak
- Notice** Exhaust starting to deteriorate

**MOT #16**

2014-05-08 07:51

MOT test number

435048224116

Result

✓ Passed

- Notice** Some steering and suspension bushes are starting to deteriorate
- Advice** Front brake disc worn, pitted or scored, but not seriously weakened (3.5.1i)
- Notice** Oil leak
- Notice** Exhaust and its mountings are starting to corrode and deteriorate
- Notice** Fuel tank strap is starting to corrode
- Notice** Child seat fitted not allowing full inspection of adult belt
- Notice** Items removed from driver's view prior to test

MOT #15

2014-05-08 07:51

MOT test number

175968624185

Result

✗ Failed

- Notice** Exhaust and its mountings are starting to corrode and deteriorate
- Pass with rectification** Offside Front Windscreen wiper does not clear the windscreen effectively (8.2.2)
- Notice** Fuel tank strap is starting to corrode
- Notice** Child seat fitted not allowing full inspection of adult belt
- Notice** Items removed from driver's view prior to test
- Pass with rectification** Nearside Front Windscreen wiper does not clear the windscreen effectively (8.2.2)
- Notice** Some steering and suspension bushes are starting to deteriorate
- Advice** Front brake disc worn, pitted or scored, but not seriously weakened (3.5.1i)
- Notice** Oil leak



MOT #14 2013-04-19 10:41

MOT test number 299539103126

Result ✓ Passed

- Notice** N/s mirror damaged
- Notice** Items removed from driver's view prior to test
- Advice** Rear registration plate deteriorated but not likely to be misread (6.3.1d)
- Notice** Some steering and suspension bushes starting to deteriorate
- Notice** Exhaust starting to deteriorate

MOT #13 2013-04-19 10:41

MOT test number 486829203129

Result ✗ Failed

- Notice** Items removed from driver's view prior to test
- Notice** Some steering and suspension bushes starting to deteriorate
- Pass with rectification** Offside Front Tyre tread depth below requirements of 1.6mm (4.1.E.1)
- Notice** Exhaust starting to deteriorate
- Pass with rectification** Nearside Front Tyre tread depth below requirements of 1.6mm (4.1.E.1)
- Notice** N/s mirror damaged
- Advice** Rear registration plate deteriorated but not likely to be misread (6.3.1d)

MOT #12 2012-04-26 13:31

MOT test number 295787212128

Result ✓ Passed

- Notice** Rear wiper blade worn
- Notice** Non obligatory mirror damaged
- Notice** Some steering and suspension bushes are starting to deteriorate

**MOT #11**

2012-04-26 10:16

MOT test number

505417212133

Result**✗ Failed****Fail**

Nearside Front Suspension arm rubber mounting deteriorated resulting in excessive movement (2.4.G.2)

Notice

Some steering and suspension bushes are starting to deteriorate

Notice

Non obligatory mirror damaged

Notice

Rear wiper blade worn

Fail

Offside Front Suspension arm rubber mounting deteriorated resulting in excessive movement (2.4.G.2)

MOT #10

2011-04-26 14:56

MOT test number

465296511133

Result**✓ Passed****Advice**

Nearside Front Lower Suspension arm rubber bush deteriorated but not resulting in excessive movement (2.4.G.2)

Notice

Rear number plate starting to deteriorate

Notice

Some steering and suspension bushes starting to deteriorate

Notice

N/s mirror glass missing

Advice

Offside Front Lower Suspension arm rubber bush deteriorated but not resulting in excessive movement (2.4.G.2)

Notice

Front n/s brake discs corroded/worn



MOT #9 2011-04-26 09:03

MOT test number 788106211141

Result ✗ Failed

Fail Offside Front Windscreen wiper does not clear the windscreen effectively (8.2.2)

Notice Front n/s brake discs corroded/worn

Advice Offside Front Lower Suspension arm rubber bush deteriorated but not resulting in excessive movement (2.4.G.2)

Fail Brakes imbalanced across an axle (3.7.B.5b)

Fail Nearside Front Windscreen wiper does not clear the windscreen effectively (8.2.2)

Notice Rear number plate starting to deteriorate

Advice Nearside Front Lower Suspension arm rubber bush deteriorated but not resulting in excessive movement (2.4.G.2)

Notice Some steering and suspension bushes starting to deteriorate

Fail Nearside Windscreen washer provides insufficient washer liquid (8.2.3)

Notice N/s mirror glass missing

MOT #8 2010-04-26 11:37

MOT test number 953316310128

Result ✓ Passed

Notice Engine/gearbox mounting(s) defective

Advice Nearside Front Lower Suspension arm rubber mounting deteriorated but not resulting in excessive movement (2.4.G.2)

Notice Slight travel in hand brake lever

Advice Exhaust has part of the system slightly deteriorated (7.1.1a)

Notice Non obligatory mirror damaged

Advice Offside Front Lower Suspension arm rubber mounting deteriorated but not resulting in excessive movement (2.4.G.2)

Notice Some steering and suspension bushes are starting to deteriorate

**MOT #7**

2009-04-06 09:32

MOT test number

564806499032

Result**✗ Failed**

- Advice** Brake hose slightly deteriorated (3.6.B.4d)
- Notice** All steering and suspension bushes starting to deteriorate
- Advice** Offside Front Lower Suspension arm rubber bush deteriorated but not resulting in excessive movement (2.4.G.2)
- Pass with rectification** Front Windscreen wiper does not clear the windscreen effectively (8.2.2)
- Pass with rectification** Offside Headlamp not working on dipped beam (1.7.5a)
- Advice** Brake pipe slightly corroded (3.6.B.2c)
- Advice** Nearside Front Lower Suspension arm rubber bush deteriorated but not resulting in excessive movement (2.4.G.2)
- Advice** Exhaust has part of the system slightly deteriorated (7.1.1a)
- Pass with rectification** Nearside Headlamp not working on dipped beam (1.7.5a)
- Pass with rectification** Offside Front Tyre tread depth below requirements of 1.6mm (4.1.E.1)

MOT #6

2009-04-06 09:32

MOT test number

191666699067

Result**✓ Passed**

- Advice** Offside Front Lower Suspension arm rubber bush deteriorated but not resulting in excessive movement (2.4.G.2)
- Advice** Brake pipe slightly corroded (3.6.B.2c)
- Notice** All steering and suspension bushes starting to deteriorate
- Advice** Nearside Front Lower Suspension arm rubber bush deteriorated but not resulting in excessive movement (2.4.G.2)
- Advice** Exhaust has part of the system slightly deteriorated (7.1.1a)
- Advice** Brake hose slightly deteriorated (3.6.B.4d)



MOT #5 2008-04-21 17:25

MOT test number 483982118196

Result ✓ Passed

- Notice** Both rear flexy brake hose ferruls corroding
- Advice** Offside Front Tyre worn close to the legal limit (4.1.E.1)
- Notice** Center section of exhaust slight blow
- Advice** Offside Inner Front Suspension arm rubber bush deteriorated but not resulting in excessive movement (2.4.G.2)
- Notice** Nearside wing mirror cracked
- Advice** Nearside Inner Front Suspension arm rubber bush deteriorated but not resulting in excessive movement (2.4.G.2)
- Notice** Rear exhaust corroding

MOT #4 2008-04-21 14:01

MOT test number 903492718113

Result ✗ Failed

- Fail** Nearside Headlamp not working on dipped beam (1.7.5a)
- Notice** Pads wearing thin
- Advice** Offside Front Tyre worn close to the legal limit (4.1.E.1)
- Notice** Center section of exhaust slight blow
- Notice** Nearside wing mirror cracked
- Advice** Offside Inner Front Suspension arm rubber bush deteriorated but not resulting in excessive movement (2.4.G.2)
- Fail** Nearside Front Tyre tread depth below requirements of 1.6mm (4.1.E.1)
- Notice** Rear exhaust corroding
- Advice** Nearside Inner Front Suspension arm rubber bush deteriorated but not resulting in excessive movement (2.4.G.2)
- Notice** Both rear flexy brake hose ferruls corroding

**MOT #3** 2007-04-19 10:31**MOT test number** 291239107419**Result** ✓ Passed**MOT #2** 2007-04-19 09:55**MOT test number** 574839207199**Result** ✗ Failed**Fail** Brake load sensing valve linkage seized (3.6.E.3)**Notice** Front brake pads low & discs worn**Notice** Front wishbones rear bushes split**Pass with rectification** Windscreen has a sticker or other obstruction encroaching into the swept area by more than 40mm outside zone 'A' (8.3.1e)**Notice** Wheel trims incorrectly fitted**Notice** Slight blow exhaust middle joint**Notice** Front tyres low tread**Fail** Centre Rear Seat belt retracting mechanism defective (5.2.5b)**MOT #1** 2006-04-28 16:30**MOT test number** 101128016192**Result** ✓ Passed**Advice** Front Suspension arm rubber bush deteriorated but not resulting in excessive movement (2.4.G.2)



Tax & MOT check

X

Untaxed

Tax expired:
26 June 2023

X

MOT

Expired:
21 March 2024

Tax status	Expired at 26 June 2023
Days left	309 days too late
MOT expiry date	21 March 2024
Full MOT history	See MOT history

Tax calculation

Vehicle class	48
Band	F
Single payment (12 months)	£ 200,00,-
Single six month payment	£ 110,00,-
Total payable by 12 monthly instalments	£ 210,00,-



Damage history

Check the damage history for this PEUGEOT. See if, where and when this PEUGEOT had damage and the car repair costs. We also check if this PEUGEOT was scrapped. Download the premium report [here](#) for the results.

Damage 1

Date	
Category	
Type	

Damage 2

Date	
Category	
Type	



Extra PEUGEOT salvage check



If this vehicle was seen at a salvage auction we offer: vehicle pictures, salvage location, retail value. Download the premium report [here](#) for more information.

More info >



Vehicle valuation

What is this car worth? See the vehicle value of this PEUGEOT in the premium report. We check: purchase value, age, mileage, MOT history, damages and online sale prices.

Trade retail value	£ 19,999
Auction value	£ 19,999
Average private trade value	£ 19,999

More info >



Owner history

For how long did the current and previous owner(s) have this PEUGEOT? How many owners did this PEUGEOT have? Check it in the premium report and see all owner registrations. Download the full report [here](#).

Owner	Since
Owner	Since
Owner	Since
Owner	Since
Owner	Since
Owner	Since
Owner	Since

More info >

Plate changes

See in this check if this PEUGEOT had different number plates.

Number of plates	1
Current registration	XXXXXX
Plate since	2024-03-28
Current registration	XXXXXX
Plate since	2024-03-28

More info >



Finance check

Check if this PEUGEOT is financed, has an outstanding loan or finance agreement. If you are purchasing a vehicle it is smart to ensure that any finance that may have been taken out on this PEUGEOT has been settled.

If not, and you buy this PEUGEOT then you could lose the money and the car you paid for.

Download the premium report [here](#) and check if this PEUGEOT is financed.

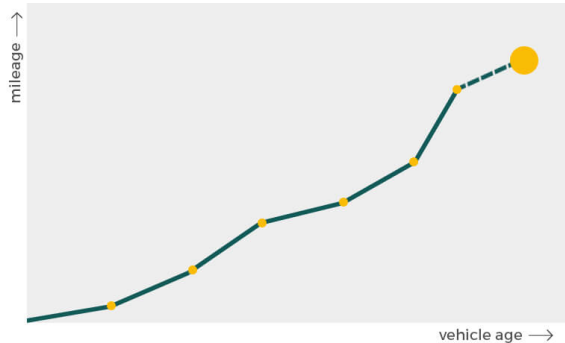
Finance company	XXXXXXXX XX
Date of agreement	XXXXXXXX XX
Agreement type	XXXXXXXX XX
Agreement term	XXXXXXXX XX
Agreement number	XXXXXXXX XX
Contact info	XXXXXXXX XX

More info >



Mileage check

Odometer	In miles
Mileage registrations	30
First mileage registration	2003-03-31
Last registration	2023-03-18
Complete history	See info



Registration #1	2003-03-31	19 mi
Registration #2	2006-04-28	18.625 mi
Registration #3	2007-04-19	21.820 mi
Registration #4	2007-04-19	21.820 mi
Registration #5	2008-04-21	26.773 mi
Registration #6	2008-04-21	26.773 mi
Registration #7	2009-04-06	30.976 mi
Registration #8	2010-04-26	35.536 mi
Registration #9	2011-04-26	37.002 mi
Registration #10	2011-04-26	37.004 mi
Registration #11	2012-04-26	42.240 mi
Registration #12	2012-04-26	42.242 mi
Registration #13	2013-04-19	45.583 mi
Registration #14	2014-05-08	48.342 mi
Registration #15	2015-05-20	65.219 mi
Registration #16	2016-05-20	75.217 mi
Registration #17	2016-05-20	75.217 mi
Registration #18	2016-05-20	75.217 mi
Registration #19	2016-05-20	75.217 mi
Registration #20	2016-05-20	75.217 mi
Registration #21	2016-05-20	75.217 mi
Registration #22	2016-05-20	75.217 mi
Registration #23	2016-05-20	75.217 mi
Registration #24	2016-05-20	75.217 mi
Registration #25	2016-05-20	75.217 mi
Registration #26	2016-05-20	75.217 mi

Registration #27	2025-25-25	25,252,442
Registration #28	2025-25-25	25,252,442
Registration #29	2025-25-25	25,252,442
Registration #30	2025-25-25	25,252,442

More info >



Car features

The PEUGEOT factory car options list is only available in the premium report.

S0225	Air conditioning
S0295	
S0482	
S0501	
S0566	
S0567	
S0569	

View the complete PEUGEOT factory list for this vehicle [here](#).

More info >

Safety ratings

NCAP rating ★★★★★

Video [see crash video](#)



Dimensions & weight

Width	1652 mm
Height	1433 mm
Length	3822 mm
Wheel base	2445 mm
Kerb weight	950 kg

Additional information

Fuel tank capacity	50 l
Fuel delivery	Multi-Point Injection
Number of doors	5
Engine number	FSJ44493145