



HONDA



report date: 2024-03-28

General information

Make	HONDA
Model	ACCORD VTEC EXECUTIVE
Colour	Blue
Year of manufacture	2005
Top speed	142 mph
0 - 60 mph	7.9 seconds
Gearbox	6 speed Manual

Engine & fuel consumption

Power	188 BHP
Max. torque	220 Nm at 4.500 rpm
Engine capacity	2.354 cc
Cylinders	4
Fuel type	Petrol
Consumption city	22.1 mpg
Consumption extra urban	40.9 mpg
Consumption combined	31.0 mpg
CO2 emission	216 g/km
CO2 label	K





Internet history

Entry 1

Date	2021-08-27
Pictures	29
Listing price	<a href="#">View report</a>



source: [autotrader.co.uk](https://www.autotrader.co.uk)



## MOT history

MOT expiry date	2022-02-25
MOT pass rate	74 %
MOT passed	14
Failed MOT tests	5
Total advice items	24
Total items failed	6

MOT #19 2021-02-16 11:46

MOT test number 129581279806

Result ✓ Passed

Next expiry date 2022-02-25

**Advice** Nearside Headlamp has a product on the lens but not seriously reducing light output (4.1.4 (b))

**Minor** Nearside Front Lower Anti-roll bar ball joint dust cover severely deteriorated (5.3.4 (b) (i))

**Advice** Offside Headlamp has a product on the lens but not seriously reducing light output (4.1.4 (b))

**Advice** Engine bay and under body covers fitted obscuring testable items from view

MOT #18 2020-02-18 13:14

MOT test number 244000933805

Result ✓ Passed

**Advice** Engine bay and under body covers fitted obscuring testable items from view

**Advice** Offside Headlamp has a product on the lens but not seriously reducing light output (4.1.4 (b))

**Advice** Nearside Headlamp has a product on the lens but not seriously reducing light output (4.1.4 (b))

**MOT #17** 2020-02-18 09:51**MOT test number** 465699266506**Result** ✗ Failed**Fail** Offside Rear Tyre has a lump, caused by separation or partial failure of its structure (5.2.3 (d) (ii))**Advice** Offside Headlamp has a product on the lens but not seriously reducing light output (4.1.4 (b))**Advice** Engine bay and under body covers fitted obscuring testable items from view**Advice** Nearside Headlamp has a product on the lens but not seriously reducing light output (4.1.4 (b))**MOT #16** 2019-02-04 10:27**MOT test number** 356304165878**Result** ✓ Passed**Advice** Offside Headlamp has a product on the lens but not seriously reducing light output (4.1.4 (b))**Advice** Nearside Headlamp has a product on the lens but not seriously reducing light output (4.1.4 (b))**Advice** Engine bay and under body covers fitted not allowing full inspection**MOT #15** 2018-02-21 10:34**MOT test number** 407666313484**Result** ✓ Passed**Advice** Plastic underside covers impede inspection**Advice** Offside Headlamp deteriorated but light output not reduced (1.7.5a)**Advice** Nearside Headlamp deteriorated but light output not reduced (1.7.5a)

**MOT #14** 2018-02-21 10:34**MOT test number** 184661984852**Result** ✗ Failed**Pass with rectification** Headlamp aim too low (1.8)**Advice** Offside Headlamp deteriorated but light output not reduced (1.7.5a)**Advice** Plastic underside covers impede inspection**Advice** Nearside Headlamp deteriorated but light output not reduced (1.7.5a)**MOT #13** 2017-02-09 11:55**MOT test number** 355941946125**Result** ✓ Passed**MOT #12** 2016-02-26 11:41**MOT test number** 477507138446**Result** ✓ Passed**Advice** Rear brake discs in poor condition**MOT #11** 2016-02-26 10:40**MOT test number** 762639128693**Result** ✗ Failed**Advice** Rear brake discs in poor condition**Fail** Offside Front Tyre has a cut in excess of the requirements deep enough to reach the ply or cords (4.1.D.1a)**MOT #10** 2015-02-17 16:12**MOT test number** 188698845494**Result** ✓ Passed

**MOT #9** 2015-02-17 16:12**MOT test number** 845878745004**Result** ✗ Failed**Pass with rectification** Nearside Windscreen wiper does not clear the windscreen effectively (8.2.2)**Pass with rectification** Offside Windscreen wiper does not clear the windscreen effectively (8.2.2)**MOT #8** 2014-02-18 13:41**MOT test number** 899399344093**Result** ✓ Passed**MOT #7** 2014-02-18 13:41**MOT test number** 225399044011**Result** ✗ Failed**Pass with rectification** Nearside Headlamp aim too high (1.8)**MOT #6** 2013-02-26 16:57**MOT test number** 177067553443**Result** ✓ Passed**MOT #5** 2012-09-22 10:41**MOT test number** 915066662256**Result** ✓ Passed**MOT #4** 2011-09-13 14:24**MOT test number** 676696051220**Result** ✓ Passed**Advice** Offside Front Tyre worn close to the legal limit (4.1.E.1)**Advice** Nearside Front Tyre worn close to the legal limit (4.1.E.1)



MOT #3	2010-09-27 13:10
MOT test number	192540970227
Result	✓ Passed
MOT #2	2009-09-29 10:52
MOT test number	300022179475
Result	✓ Passed
Advice	Offside Rear Tyre worn close to the legal limit (4.1.E.1)
MOT #1	2008-09-29 11:25
MOT test number	323313578454
Result	✓ Passed



Damage history

Check the damage history for this HONDA. See if, where and when this HONDA had damage and the car repair costs. We also check if this HONDA was scrapped. Download the premium report [here](#) for the results.

Damage 1

Date	
Category	
Type	

Damage 2

Date	
Category	
Type	



Extra HONDA salvage check



If this vehicle was seen at a salvage auction we offer: vehicle pictures, salvage location, retail value. Download the premium report [here](#) for more information.

More info >





Vehicle valuation

What is this car worth? See the vehicle value of this HONDA in the premium report. We check: purchase value, age, mileage, MOT history, damages and online sale prices.

Trade retail value	£ 19,999
Auction value	£ 19,999
Average private trade value	£ 19,999

More info >



Owner history

For how long did the current and previous owner(s) have this HONDA? How many owners did this HONDA have? Check it in the premium report and see all owner registrations. Download the full report [here](#).

Owner	Since
Owner	Since
Owner	Since
Owner	Since
Owner	Since
Owner	Since
Owner	Since

More info >

Plate changes

See in this check if this HONDA had different number plates.

Number of plates	1
Current registration	<b>RF55UCT</b>
Plate since	2024-03-28
Current registration	<b>RF55UCT</b>
Plate since	2024-03-28

More info >



Finance check

Check if this HONDA is financed, has an outstanding loan or finance agreement. If you are purchasing a vehicle it is smart to ensure that any finance that may have been taken out on this HONDA has been settled.

If not, and you buy this HONDA then you could lose the money and the car you paid for.

Download the premium report [here](#) and check if this HONDA is financed.

Finance company	XXXXXXXX	XXXX
Date of agreement	XXXXXXXX	XXXX
Agreement type	XXXXXXXX	XXXX
Agreement term	XXXXXXXX	XXXX
Agreement number	XXXXXXXX	XXXX
Contact info	XXXXXXXX	XXXX

More info >



Mileage check

Odometer	In miles
Mileage registrations	19
First mileage registration	2005-09-30
Last registration	2021-02-16
Complete history	<a href="#">See info</a>



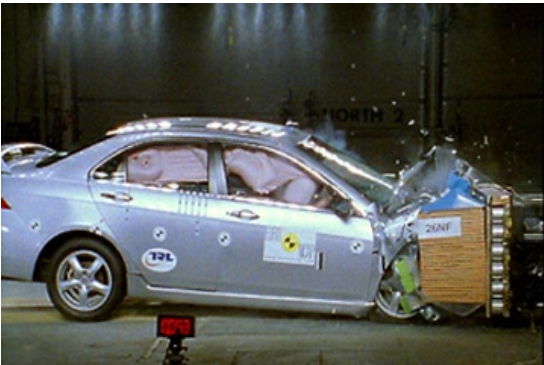
Registration #1	2005-09-30	10 mi
Registration #2	2008-09-29	16.243 mi
Registration #3	2009-09-29	22.489 mi
Registration #4	2010-09-27	30.324 mi
Registration #5	2011-09-13	37.650 mi
Registration #6	2012-09-22	44.244 mi
Registration #7	2013-02-26	46.479 mi
Registration #8	2014-02-18	51.451 mi
Registration #9	2015-02-17	59.362 mi
Registration #10	2016-02-26	66.665 mi
Registration #11	2016-02-26	66.665 mi
Registration #12	2016-02-26	66.665 mi
Registration #13	2016-02-26	66.665 mi
Registration #14	2016-02-26	66.665 mi
Registration #15	2016-02-26	66.665 mi
Registration #16	2016-02-26	66.665 mi
Registration #17	2016-02-26	66.665 mi
Registration #18	2016-02-26	66.665 mi
Registration #19	2016-02-26	66.665 mi

More info >



Safety ratings

NCAP rating	★★★★☆
Video	<a href="#">see crash video</a>



Dimensions & weight

Width	1760 mm
Height	1445 mm
Length	4665 mm
Wheel base	2670 mm
Kerb weight	1435 kg

Additional information

Fuel tank capacity	65 l
Fuel delivery	Multi-Point Injection
Number of doors	4
Number of seats	5
Engine number	K24A32006989